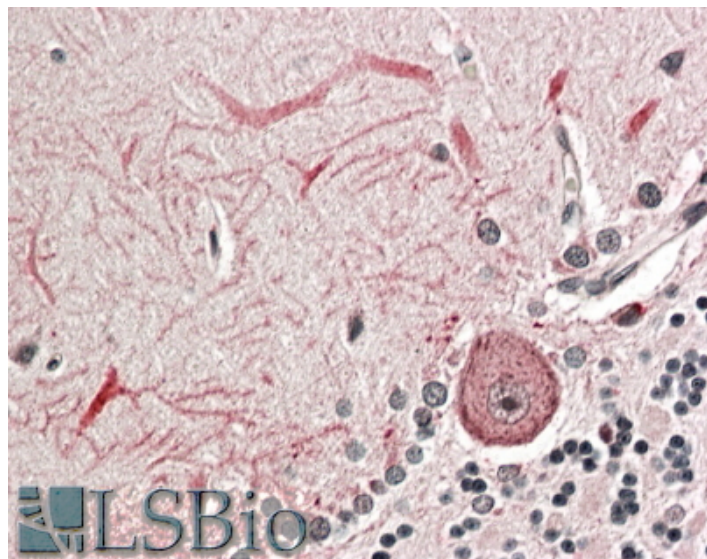


# GOAT ANTI-KEAP1 (AA41-53) ANTIBODY

**SKU:** EB10963



## SPECIFICATIONS

<b>Formulation</b>	Supplied at 0.5 mg/ml in Tris saline, 0.02% sodium azide, pH7.3 with 0.5% bovine serum albumin.
<b>Unit Size</b>	100 µg
<b>Storage</b>	Aliquot and store at -20°C. Minimize freezing and thawing.
<b>Instructions</b>	
<b>Synonym / Alias</b>	kelch-like protein 19  cytosolic inhibitor of Nrf2  MGC4407  MGC20887  MGC1114  MGC10630  KLHL19  KIAA0132  INrf2  kelch-like ECH-associated protein 1 KEAP1
<b>Names</b>	
<b>Usage</b>	<strong>Immunofluorescence:</strong> Strong expression of the protein seen in the nucleus and cytoplasm of HeLa cells. Recommended concentration: 5µg/ml.
<b>Summary</b>	
<b>Accession ID</b>	NP_036421.2
<b>Blocking Peptide</b>	EBP10963
<b>Immunogen</b>	Peptide with sequence C-EVTPSQHGNRTFS, from the internal region (near N Terminus) of the protein sequence according to NP_036421.2.
<b>Product Comments</b>	Reported variants represent identical protein: NP_036421.2, NP_987096.1
<b>Peptide Sequence</b>	C-EVTPSQHGNRTFS

<b>Purification Method</b>	Purified from goat serum by ammonium sulphate precipitation followed by antigen affinity chromatography using the immunizing peptide.
<b>Shipping Instructions</b>	Refrigerated
<b>Predicted Species</b>	Human, Mouse, Rat, Dog, Pig, Cow
<b>Reactive Species</b>	Human
<b>Human Gene ID</b>	9817
<b>Mouse Gene ID</b>	50868
<b>Rat Gene ID</b>	117519
<b>Product Grade</b>	<a href="https://prod-vector-labs-pimcore-assets.s3.us-east-1.amazonaws.com/assets/products/image/elite_medium.png">https://prod-vector-labs-pimcore-assets.s3.us-east-1.amazonaws.com/assets/products/image/elite_medium.png</a>
<b>IHC Results</b>	In paraffin embedded Human Cerebellum shows textured cytoplasm staining in Purkinje cell and processes. Recommended concentration: 3-5µg/ml.
<b>ELISA</b>	
<b>Detection Limit</b>	Antibody detection limit dilution 1:32000.
<b>Application Type</b>	Pep-ELISA, IF, IHC

## DOCUMENTS

- [Data Sheet](#)

## GALLERY IMAGES

