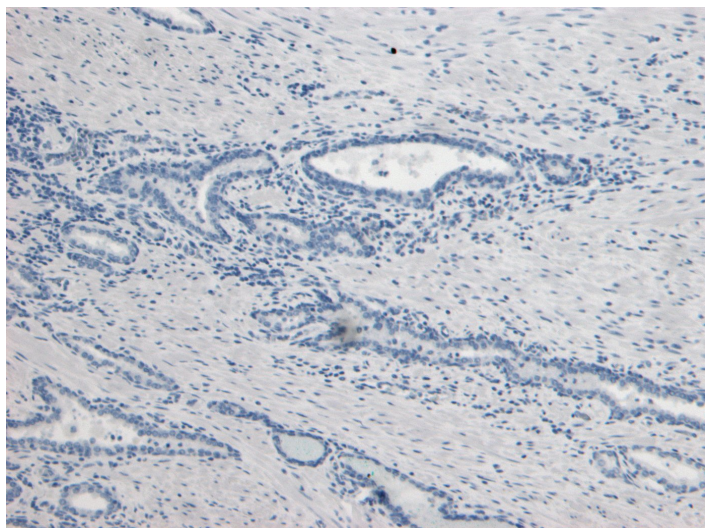


GOAT ANTI-KLK2 ANTIBODY

SKU: EB07673



SPECIFICATIONS

Formulation Supplied at 0.5 mg/ml in Tris saline, 0.02% sodium azide, pH7.3 with 0.5% bovine serum albumin.

Unit Size 100 µg

Storage Instructions Aliquot and store at -20°C. Minimize freezing and thawing.

Synonym /

Alias Names kallikrein 2, prostatic|glandular kallikrein 2|hK2|MGC12201|KLK2A2|kallikrein-related peptidase 2|KLK2

Accession ID NP_005542.1; NP_001002231.1

Blocking Peptide EBP07673

Immunogen Peptide with sequence C-KHQSLRPDEDSSHD, from the internal region of the protein sequence according to NP_005542.1; NP_001002231.1.

Product Comments This antibody is expected to recognize both reported isoforms (NP_005542.1; NP_001002231.1).

Peptide Sequence C-KHQSLRPDEDSSHD

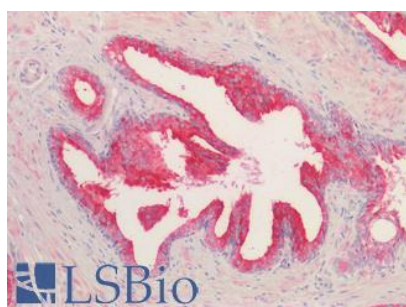
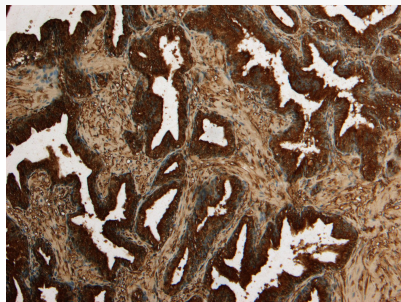
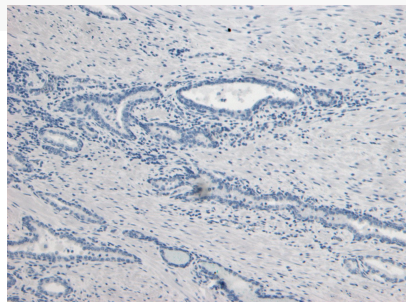
Purification Method Purified from goat serum by ammonium sulphate precipitation followed by antigen affinity chromatography using the immunizing peptide.

Shipping Instructions	Refrigerated
Predicted Species	Human
Reactive Species	Human
Human Gene ID	3817
Product Grade	https://prod-vector-labs-pimcore-assets.s3.us-east-1.amazonaws.com/assets/products/image/elite_medium.png
IHC Results	Paraffin embedded Human Prostate. Recommended concentration: 2.5-8µg/ml.
ELISA	
Detection Limit	Antibody detection limit dilution 1:64000.
Western Blot	Approx 26kDa band observed in lysates of cell line HeLa, which was successfully blocked by incubation with the immunizing peptide (calculated MW of 28.7 according to NP_005542.1 and 24.7kDa according to NP_001002231.1). Recommended concentration:0.5-2 µg/ml. Primary incubation 1 hour at room temperature.
Application Type	Pep-ELISA, WB, IHC

DOCUMENTS

- [Data Sheet](#)

GALLERY IMAGES



LSBio