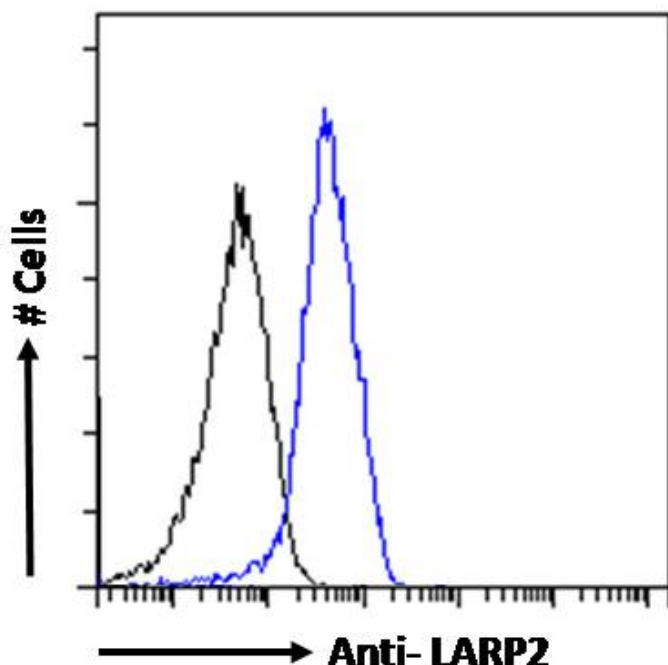


GOAT ANTI-LARP2 / LARP1B ANTIBODY

SKU: EB07617



SPECIFICATIONS

Formulation Supplied at 0.5 mg/ml in Tris saline, 0.02% sodium azide, pH7.3 with 0.5% bovine serum albumin.

Unit Size 100 µg

Storage Instructions Aliquot and store at -20°C. Minimize freezing and thawing.

Synonym / Alias Names La ribonucleoprotein domain family member 2|MGC75174|MGC117277|DKFZp686L13217|La ribonucleoprotein domain family, member 2|LARP2

Usage Summary **Immunofluorescence:** Strong expression of the protein seen in the cytoplasm of A431 cells. Recommended concentration: 10µg/ml. **Flow Cytometry:** Flow cytometric analysis of HepG2 cells. Recommended concentration: 10ug/ml.

Accession ID NP_060548.2

Blocking Peptide EBP07617

Immunogen	Peptide with sequence C-QGVLHIPKKDLTDE, from the internal region of the protein sequence according to NP_060548.2.
Product Comments	This antibody is expected to recognise isoform 1 (NP_060548.2) only.
Peptide Sequence	C-QGVLHIPKKDLTDE
Purification Method	Purified from goat serum by ammonium sulphate precipitation followed by antigen affinity chromatography using the immunizing peptide.
Shipping Instructions	Refrigerated
Predicted Species	Human
Reactive Species	Human
Human Gene ID	55132
Product Grade	https://prod-vector-labs-pimcore-assets.s3.us-east-1.amazonaws.com/assets/products/image/elite_medium.png
ELISA Detection Limit	Antibody detection limit dilution 1:128000.
Application Type	Pep-ELISA, IF, FC

DOCUMENTS

- [Data Sheet](#)

GALLERY IMAGES

