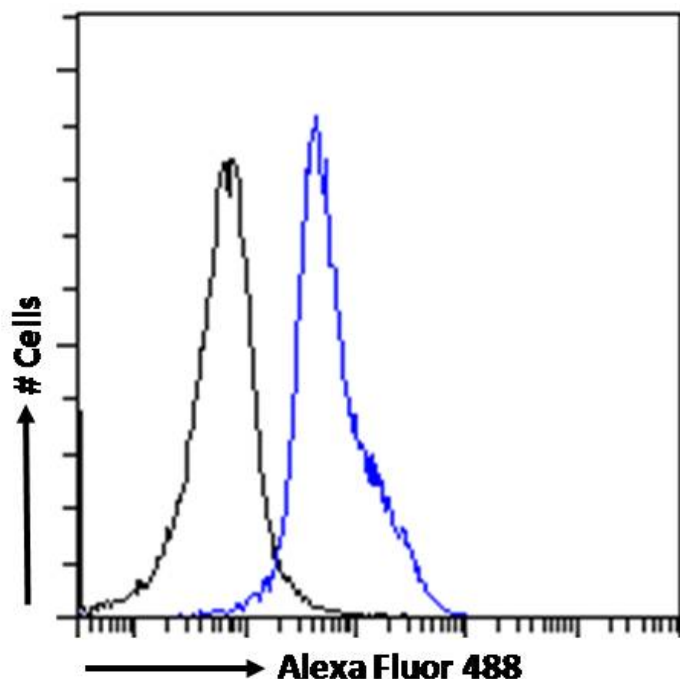


GOAT ANTI-LEF1 ANTIBODY

SKU: EB07196



SPECIFICATIONS

Formulation Supplied at 0.5 mg/ml in Tris saline, 0.02% sodium azide, pH7.3 with 0.5% bovine serum albumin.

Unit Size 100 µg

Storage Instructions Aliquot and store at -20°C. Minimize freezing and thawing.

Synonym / Alias Names lymphoid enhancer binding factor-1|TCF1ALPHA|DKFZp586H0919|HGNC:6551|lymphoid enhancer-binding factor 1|LEF1

Usage Summary **Immunofluorescence:** Strong expression of the protein seen in the nuclei of Jurkat and U2OS cells. Recommended concentration: 10µg/ml. **Flow Cytometry:** Flow cytometric analysis of Jurkat cells. Recommended concentration: 10ug/ml.

Accession ID NP_057353.1; NP_001124185.1; NP_001124186.1; NP_001159591.1

Blocking Peptide EBP07196

Immunogen Peptide with sequence C-QHEQRKEQEPKRPH, from the internal region of the protein sequence according to NP_057353.1; NP_001124185.1; NP_001124186.1; NP_001159591.1.

Peptide Sequence	C-QHEQRKEQEPKRPH
Purification Method	Purified from goat serum by ammonium sulphate precipitation followed by antigen affinity chromatography using the immunizing peptide.
Shipping Instructions	Refrigerated
Predicted Species	Human, Mouse, Rat, Dog, Cow
Reactive Species	Human
Human Gene ID	51176
Mouse Gene ID	16842
Rat Gene ID	161452
Product Grade	https://prod-vector-labs-pimcore-assets.s3.us-east-1.amazonaws.com/assets/products/image/elite_plus_medium.png
ELISA Detection Limit	Antibody detection limit dilution 1:32000.
Western Blot	Approx 50--55kDa band observed in nuclear lysates of cell line K562 (calculated MW of 44.2kDa according to NP_057353.1)/ This molecular weight is routinely observed by other sources and was successfully blocked by incubation with the immunising peptide . Recommended concentration: 1-3µg/ml. . Primary incubation 1 hour at room temperature.
Application Type	Pep-ELISA, WB, IF, FC

DOCUMENTS

- [Data Sheet](#)

GALLERY IMAGES

