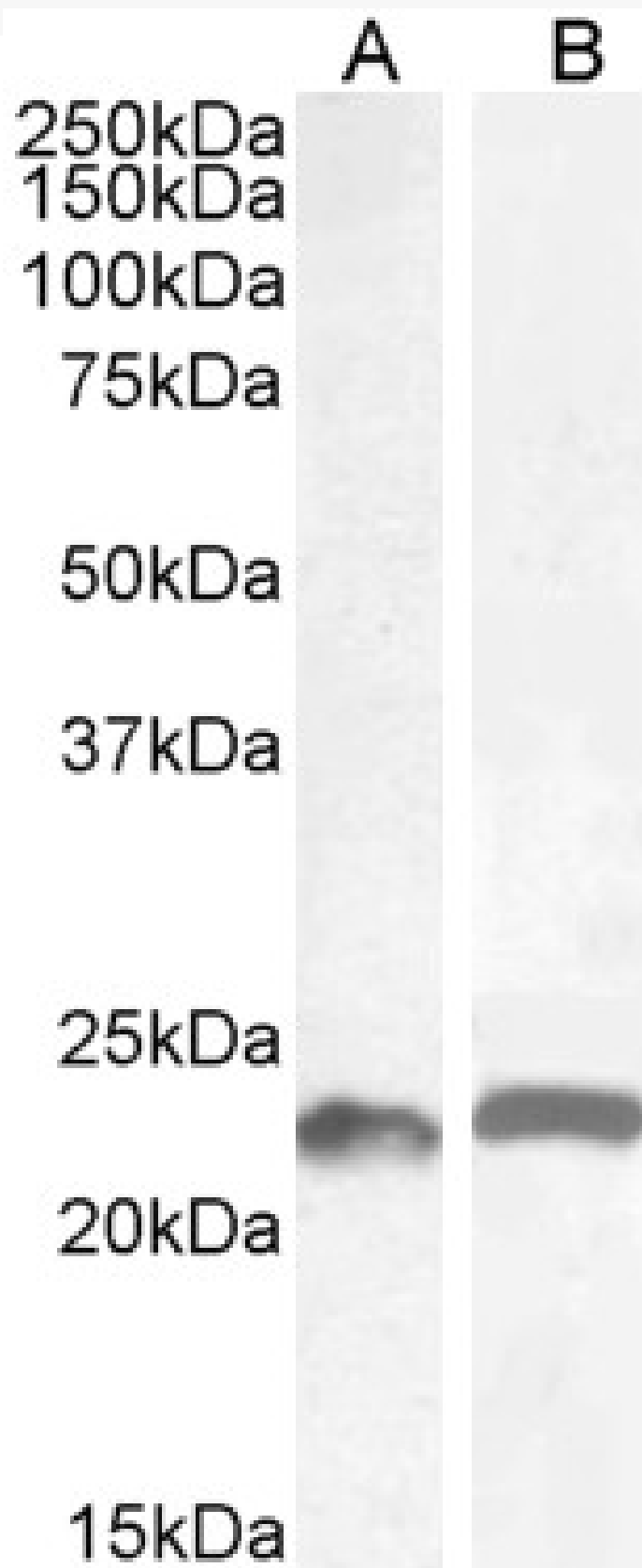


# GOAT ANTI-LIF (AA28-39) ANTIBODY

**SKU:** EB11864



## SPECIFICATIONS

<b>Formulation</b>	Supplied at 0.5 mg/ml in Tris saline, 0.02% sodium azide, pH7.3 with 0.5% bovine serum albumin.
<b>Unit Size</b>	100 µg
<b>Storage Instructions</b>	Aliquot and store at -20°C. Minimize freezing and thawing.
<b>Synonym / Alias Names</b>	OTTHUMP00000198698 MLPLI melanoma-derived LPL inhibitor LIF leukemia inhibitory factor (cholinergic differentiation factor) leukemia inhibitory factor human interleukin in DA cells HILDA hepatocyte-stimulating factor III differentiation-stimulating factor differentiation-inducing factor differentiation stimulating factor differentiation inhibitory activity DIA D factor cholinergic differentiation factor CDF
<b>Accession ID</b>	NP_002300.1
<b>Blocking Peptide</b>	EBP11864
<b>Immunogen</b>	Peptide with sequence TPVNATCAIRHP, from the internal region of the protein sequence according to NP_002300.1.
<b>Peptide Sequence</b>	TPVNATCAIRHP
<b>Purification Method</b>	Purified from goat serum by ammonium sulphate precipitation followed by antigen affinity chromatography using the immunizing peptide.
<b>Shipping Instructions</b>	Refrigerated
<b>Predicted Species</b>	Human, Mouse, Rat
<b>Reactive Species</b>	Mouse, Rat
<b>Human Gene ID</b>	3976
<b>Mouse Gene ID</b>	16878
<b>Rat Gene ID</b>	60584
<b>Product Grade</b>	<a href="https://prod-vector-labs-pimcore-assets.s3.us-east-1.amazonaws.com/assets/products/image/elite_medium.png">https://prod-vector-labs-pimcore-assets.s3.us-east-1.amazonaws.com/assets/products/image/elite_medium.png</a>
<b>ELISA Detection Limit</b>	Antibody detection limit dilution 1:64000.
<b>Western Blot</b>	Approx 23kDa band observed in Mouse and Rat Colon lysates (calculated MW of 22.3kDa according to Mouse NP_032527.1 and 22.1kDa according to Rat NP_071532.2). Recommended concentration: 0.5-1.5µg/ml. Primary incubation 1 hour at room temperature.
<b>Application Type</b>	Pep-ELISA, WB

## DOCUMENTS

- [Data Sheet](#)

## GALLERY IMAGES

