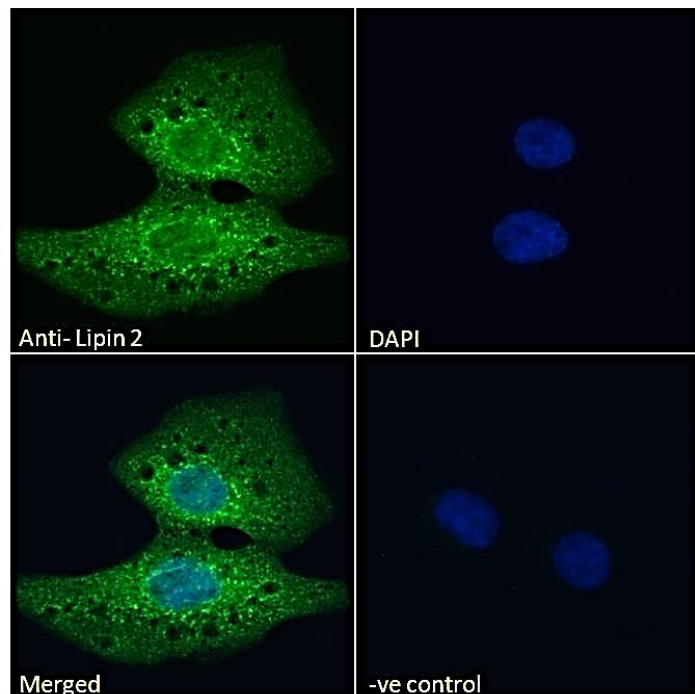


GOAT ANTI-LIPIN 2 ANTIBODY

SKU: EB06664



SPECIFICATIONS

Formulation Supplied at 0.5 mg/ml in Tris saline, 0.02% sodium azide, pH7.3 with 0.5% bovine serum albumin.

Unit Size 100 µg

Storage Instructions Aliquot and store at -20°C. Minimize freezing and thawing.

Synonym /

Alias lipin 2|KIAA0249|LPIN2

Names

Usage Summary **Immunofluorescence:** Strong expression of the protein seen in the cytoplasm of A431 and U2OS cells. Recommended concentration: 10µg/ml. **Flow Cytometry:** Flow cytometric analysis of A431 cells. Recommended concentration: 10ug/ml.

Accession ID NP_055461.1

Blocking Peptide EBP06664

Immunogen	Peptide with sequence CYWRDPIEVDLDDLS, from the C Terminus of the protein sequence according to NP_055461.1.
Peptide Sequence	CYWRDPIEVDLDDLS
Purification Method	Purified from goat serum by ammonium sulphate precipitation followed by antigen affinity chromatography using the immunizing peptide.
Shipping Instructions	Refrigerated
Predicted Species	Human, Mouse, Rat, Pig
Reactive Species	Human
Human Gene ID	9663
Product Grade	https://prod-vector-labs-pimcore-assets.s3.us-east-1.amazonaws.com/assets/products/image/elite_medium.png
ELISA Detection Limit	Antibody detection limit dilution 1:8000.
Application Type	Pep-ELISA, IF, FC

DOCUMENTS

- [Data Sheet](#)

GALLERY IMAGES

