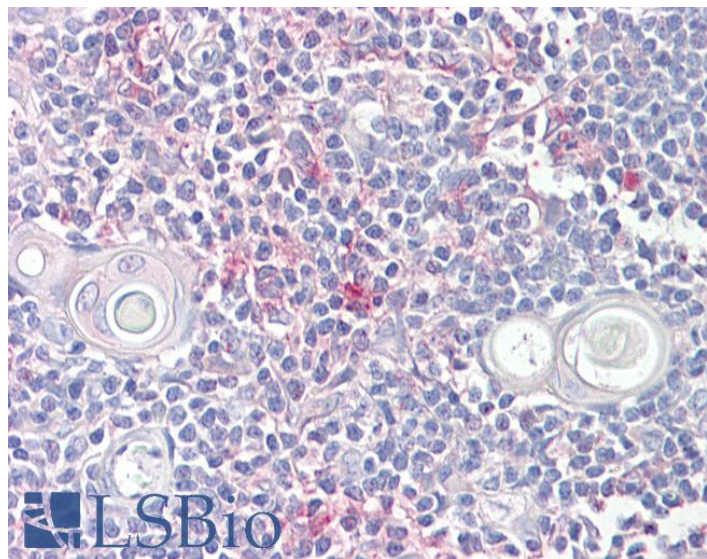


# GOAT ANTI-LITAF ANTIBODY

**SKU:** EB08099



## SPECIFICATIONS

<b>Formulation</b>	Supplied at 0.5 mg/ml in Tris saline, 0.02% sodium azide, pH7.3 with 0.5% bovine serum albumin.
<b>Unit Size</b>	100 µg
<b>Storage Instructions</b>	Aliquot and store at -20°C. Minimize freezing and thawing.
<b>Synonym / Alias</b>	tumor protein small integral membrane protein of lysosome/late endosome LPS-induced TNF-alpha factor TP53I7 SIMPLE PIG7 MGC125276 MGC125275 MGC125274 MGC116701 MGC116700 MGC116698 FLJ38636 CMT1C lipopolysaccharide-induced
<b>Names</b>	TNF factor LITAF
<b>Accession ID</b>	NP_004853.2; NP_001129945.1
<b>Blocking Peptide</b>	EBP08099
<b>Immunogen</b>	Peptide with sequence C-PDGKGMNPPSYTQ, from the internal region of the protein sequence according to NP_004853.2; NP_001129945.1.
<b>Product Comments</b>	This antibody is expected to crossreact with both reported isoforms (NP_004853.2; NP_001129945.1).
<b>Peptide Sequence</b>	C-PDGKGMNPPSYTQ
<b>Purification Method</b>	Purified from goat serum by ammonium sulphate precipitation followed by antigen affinity chromatography using the immunizing peptide.
<b>Shipping Instructions</b>	Refrigerated
<b>Predicted Species</b>	Human, Mouse, Rat
<b>Reactive Species</b>	Human

<b>Human Gene ID</b>	9516
<b>Mouse Gene ID</b>	56722
<b>Rat Gene ID</b>	65161
<b>Product Grade</b>	<a href="https://prod-vector-labs-pimcore-assets.s3.us-east-1.amazonaws.com/assets/products/image/elite_medium.png">https://prod-vector-labs-pimcore-assets.s3.us-east-1.amazonaws.com/assets/products/image/elite_medium.png</a>
<b>IHC Results</b>	Paraffin embedded Human Thymus. Recommended concentration: 6.5µg/ml.
<b>ELISA Detection Limit</b>	Antibody detection limit dilution 1:8000.
<b>Western Blot</b>	Preliminary experiments gave an approx 25kDa band in Human Lymph Node lysates and in lysates of cell lines HeLa and HepG2 after 0.1µg/ml antibody staining. Please note that currently we cannot find an explanation in the literature for the band we observe given the calculated size of 17.1kDa according to NP_004853.2. The 25kDa band was successfully blocked by incubation with the immunizing peptide.
<b>Application Type</b>	Pep-ELISA, IHC

## DOCUMENTS

- [Data Sheet](#)

## GALLERY IMAGES

