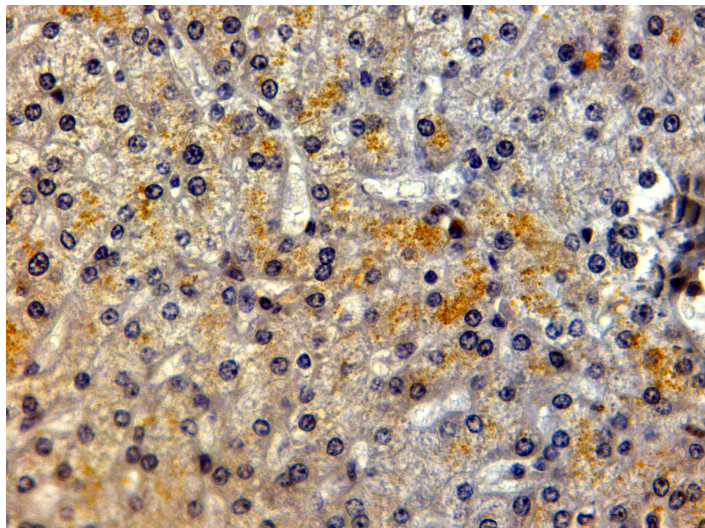


GOAT ANTI-LRP5 ANTIBODY

SKU: EB06771



SPECIFICATIONS

Formulation Supplied at 0.5 mg/ml in Tris saline, 0.02% sodium azide, pH7.3 with 0.5% bovine serum albumin.

Unit Size 100 µg

Storage Instructions Aliquot and store at -20°C. Minimize freezing and thawing.

Synonym / Alias Names exudative vitreoretinopathy 1|EVR4|EVR1|osteoporosis pseudoglioma syndrome|low density lipoprotein receptor-related protein 7|VBCH2|OPS|OPPG|LRP7|LR3|HBM|BMND1|HGNC:6697|low density lipoprotein receptor-related protein 5|LRP5

Accession ID NP_002326.2

Blocking Peptide EBP06771

Immunogen Peptide with sequence C-ERVEKTTGDKRT, from the internal region of the protein sequence according to NP_002326.2.

Peptide Sequence C-ERVEKTTGDKRT

Purification Method Purified from goat serum by ammonium sulphate precipitation followed by antigen affinity chromatography using the immunizing peptide.

Shipping Instructions Refrigerated

Predicted Species	Human, Mouse, Rat
Reactive Species	Human
Human Gene ID	4041
Product Grade	https://prod-vector-labs-pimcore-assets.s3.us-east-1.amazonaws.com/assets/products/image/elite_medium.png
IHC Results	In paraffin embedded Human Liver shows weak cytoplasm staining in some hepatocytes. Recommended concentration: 2-4µg/ml.
ELISA Detection Limit	Antibody detection limit dilution 1:16000.
Western Blot	Approx 180kDa band observed in lysates of cell line HepG2 (calculated MW of 179kDa according to NP_002326.2). Recommended concentration: 1-3µg/ml. Primary incubation was 1 hour. Preliminary testing was unsuccessful on Mouse Liver for this particular batch.
Application Type	Pep-ELISA, WB, IHC

DOCUMENTS

- [Data Sheet](#)

GALLERY IMAGES

