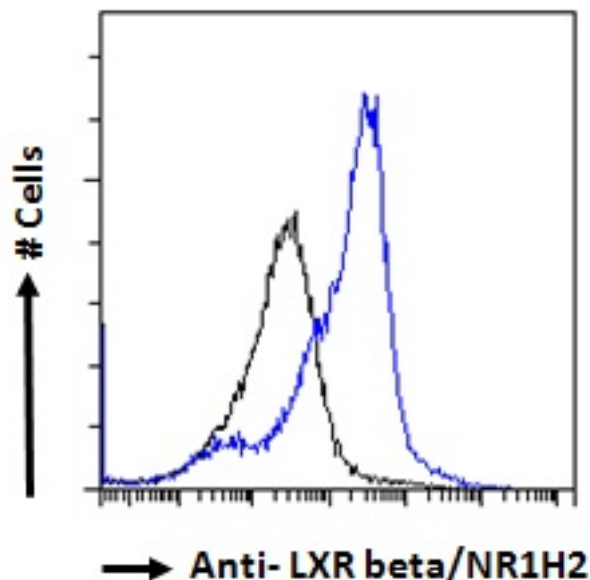


# GOAT ANTI-LXR BETA / NR1H2 ANTIBODY

SKU: EB06521



## SPECIFICATIONS

**Formulation** Supplied at 0.5 mg/ml in Tris saline, 0.02% sodium azide, pH7.3 with 0.5% bovine serum albumin.

**Unit Size** 100 µg

**Storage Instructions** Aliquot and store at -20°C. Minimize freezing and thawing.

**Synonym / Alias Names** steroid hormone-nuclear receptor NER|oxysterols receptor LXR-beta|nuclear orphan receptor LXR-beta|liver X receptor-beta|liver X receptor beta|LX receptor beta|LXRB|ubiquitously-expressed nuclear receptor|nuclear receptor subfamily 1, group H, member 2|RIP15|NER-I|UNR|NER|LXR-b|NR1H2

**Usage Summary** **Immunofluorescence:** Strong expression of the protein seen in the nuclei of U2OS cells. Recommended concentration: 10µg/ml. **Flow Cytometry:** Flow cytometric analysis of HeLa cells. Recommended concentration: 10ug/ml.

**Accession ID** NP\_009052.3

**Blocking Peptide** EBP06521

**Immunogen** Peptide with sequence SSPTTSSLDTPLGC, from the N Terminus of the protein sequence according to NP\_009052.3.

**Product Comments** Based on the peptide used, this antibody is expected to be specific for LXR beta and not to cross-react with LXR alpha.

<b>Peptide Sequence</b>	SSPTTSSLDTPLPGC
<b>Purification Method</b>	Purified from goat serum by ammonium sulphate precipitation followed by antigen affinity chromatography using the immunizing peptide.
<b>Shipping Instructions</b>	Refrigerated
<b>Predicted Species</b>	Human, Mouse, Rat, Dog
<b>Reactive Species</b>	Human
<b>Human Gene ID</b>	7376
<b>Product Grade</b>	<a href="https://prod-vector-labs-pimcore-assets.s3.us-east-1.amazonaws.com/assets/products/image/elite_medium.png">https://prod-vector-labs-pimcore-assets.s3.us-east-1.amazonaws.com/assets/products/image/elite_medium.png</a>
<b>ELISA Detection Limit</b>	Antibody detection limit dilution 1:128000.
<b>Application Type</b>	Pep-ELISA, IF, FC

## DOCUMENTS

- [Data Sheet](#)

## GALLERY IMAGES

