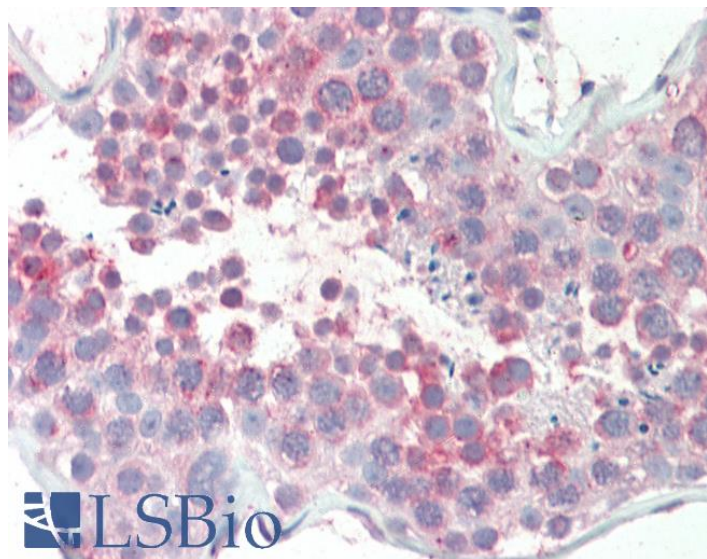


GOAT ANTI-MARCH10 ANTIBODY

SKU: EB08235



SPECIFICATIONS

Formulation Supplied at 0.5 mg/ml in Tris saline, 0.02% sodium azide, pH7.3 with 0.5% bovine serum albumin.

Unit Size 100 µg

Storage Instructions Aliquot and store at -20°C. Minimize freezing and thawing.

Synonym /

Alias Names MARCH10|membrane-associated ring finger (C3HC4) 10|FLJ35757|MARCH-X|RNF190|ring finger protein 190

Accession ID NP_001094345.1; NP_689811.2

Blocking Peptide EBP08235

Immunogen Peptide with sequence C-SRNYPQPRTEE, from the internal region of the protein sequence according to NP_001094345.1; NP_689811.2.

Product Comments This antibody is expected to recognise both reported isoforms (NP_001094345.1; NP_689811.2), which are identical.

Peptide Sequence C-SRNYPQPRTEE

Purification Method Purified from goat serum by ammonium sulphate precipitation followed by antigen affinity chromatography using the immunizing peptide.

Shipping Instructions	Refrigerated
Predicted Species	Human, Rat, Cow
Reactive Species	Human, Rat
Human Gene ID	162333
Rat Gene ID	303596
Product Grade	https://prod-vector-labs-pimcore-assets.s3.us-east-1.amazonaws.com/assets/products/image/elite_medium.png
IHC Results	Paraffin embedded Human Testis. Recommended concentration: 5µg/ml.
ELISA	
Detection Limit	Antibody detection limit dilution 1:8000.
Western Blot	Approx. 90 kDa band observed in Rat Testis lysates (calculated MW of 90.5 kDa according to Human NP_689811.2 and of 87.9 kDa according to Mouse NP_766156.2). Recommended concentration: 0.3-1µg/ml. Primary incubation was 1 hour. An additional band of unknown identity was also consistently observed at 37 kDa. This band was successfully blocked by incubation with the immunising peptide.
Application Type	Pep-ELISA, WB, IHC

DOCUMENTS

- [Data Sheet](#)

GALLERY IMAGES

