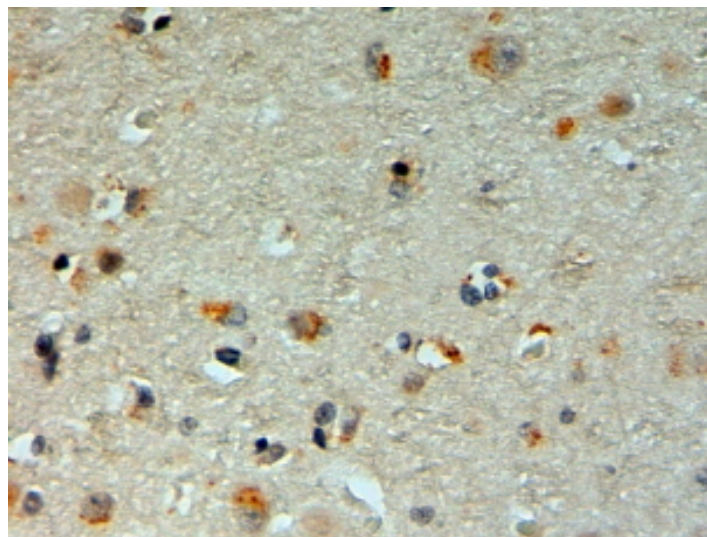


GOAT ANTI-MINDBOMB 1 / MIB1 ANTIBODY

SKU: EB11532



SPECIFICATIONS

Formulation Supplied at 0.5 mg/ml in Tris saline, 0.02% sodium azide, pH7.3 with 0.5% bovine serum albumin.

Unit Size 100 µg

Storage Instructions Aliquot and store at -20°C. Minimize freezing and thawing.

Synonym / Alias Names ZZZ6|ZZANK2|zinc finger ZZ type with ankyrin repeat domain protein 2|ubiquitin ligase protein MIB1|ubiquitin ligase mind bomb|OTTHUMP00000162549|mindbomb homolog 1 (Drosophila)|mind bomb homolog 1|MIB1|MIB|MGC129660|MGC129659|FLJ90676|E3 ubiquitin-protein ligase MIB1|DKFZp761M1710|DKFZp686I0769|DIP-1|DAK-1|DAK-interacting protein 1

Usage Summary Purchase the +ve control! The transfected lysate used in QC is available for sale. Please email sales@everestbiotech.com to request datasheet, pricing and delivery information.

Accession ID NP_065825.1

Blocking Peptide EBP11532

Immunogen Peptide with sequence C-DKDNTNVNADVQKLQ, from the internal region (near C Terminus) of the protein sequence according to NP_065825.1.

Peptide Sequence C-DKDNTNVNADVQKLQ

Purification Method Purified from goat serum by ammonium sulphate precipitation followed by antigen affinity chromatography using the immunizing peptide.

| | |
|------------------------------|---|
| Shipping Instructions | Refrigerated |
| Predicted Species | Human, Mouse, Rat, Dog, Cow |
| Reactive Species | Human |
| Human Gene ID | 57534 |
| Mouse Gene ID | 225164 |
| Rat Gene ID | 307594 |
| Product Grade | https://prod-vector-labs-pimcore-assets.s3.us-east-1.amazonaws.com/assets/products/image/elite_medium.png |
| IHC Results | In paraffin embedded Human Cerebral Cortex shows staining of cytoplasm in the neuronal bodies, on one side of the nucleus. Recommended concentration, 2-4µg/ml. |
| ELISA | |
| Detection Limit | Antibody detection limit dilution 1:16000. |
| Western Blot | In transfected HEK293 transiently expressing Human MIB1 (myc and DYKDDDDK tagged), a band of approx. 135kDa is observed. No bands are observed in mock-transfected HEK293 and the same band is observed using anti-myc antibody. Recommended concentration, 0.5-1µg/ml. |
| Application Type | Pep-ELISA, WB-Trf, IHC |

DOCUMENTS

- [Data Sheet](#)

GALLERY IMAGES

