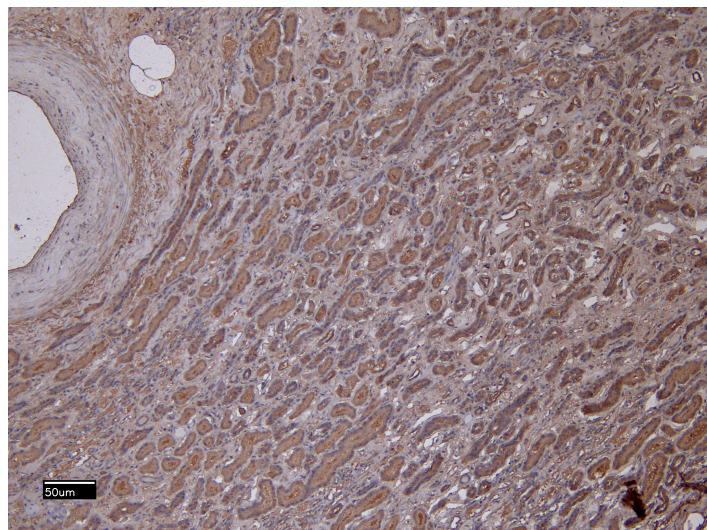


# GOAT ANTI-MMP3 (AA459-473) ANTIBODY

**SKU:** EB11719



## SPECIFICATIONS

**Formulation** Supplied at 0.5 mg/ml in Tris saline, 0.02% sodium azide, pH7.3 with 0.5% bovine serum albumin.

**Unit Size** 100 µg

**Storage Instructions** Aliquot and store at -20°C. Minimize freezing and thawing.

**Synonym / Alias Names** STR1|STMY1|STMY|SL-1|proteoglycan|OTTHUMP00000045949|MMP-3|MMP3|MGC126104|MGC126103|MGC126102|matrix metalloproteinase-3|matrix metalloproteinase 3 (stromelysin 1, progelatinase)|matrix metalloproteinase 3 (stromelysin 1, progelatinase)|CHDS6

**Accession ID** NP\_002413.1

**Blocking Peptide** EBP11719

**Immunogen** Peptide with sequence C-DPNAKKVTHLKSNS, from the C Terminus of the protein sequence according to NP\_002413.1.

**Peptide Sequence** C-DPNAKKVTHLKSNS

**Purification Method** Purified from goat serum by ammonium sulphate precipitation followed by antigen affinity chromatography using the immunizing peptide.

**Shipping Instructions** Refrigerated

**Predicted Species** Human

**Reactive Species** Human, Mouse

<b>Human Gene ID</b>	4314
<b>Product Grade</b>	<a href="https://prod-vector-labs-pimcore-assets.s3.us-east-1.amazonaws.com/assets/products/image/elite_medium.png">https://prod-vector-labs-pimcore-assets.s3.us-east-1.amazonaws.com/assets/products/image/elite_medium.png</a>
<b>IHC Results</b>	Paraffin embedded Human Kidney. Recommended concentration: 4-6µg/ml.
<b>ELISA</b>	
<b>Detection Limit</b>	Antibody detection limit dilution 1:128000.
<b>Western Blot</b>	Approx 55kDa band observed in Human Prostate and approx. 60kDa band in Mouse Eye lysates (calculated MW of 54.0 kDa according to Human NP_002413.1 and Mouse NP_034939.1). Recommended concentration: 0.1-0.3µg/ml. An additional band of unknown identity was also consistently observed at 24kDa in Human. This band was successfully blocked by incubation with the immunizing peptide.
<b>Application Type</b>	Pep-ELISA, WB, IHC

## DOCUMENTS

- [Data Sheet](#)

## GALLERY IMAGES

