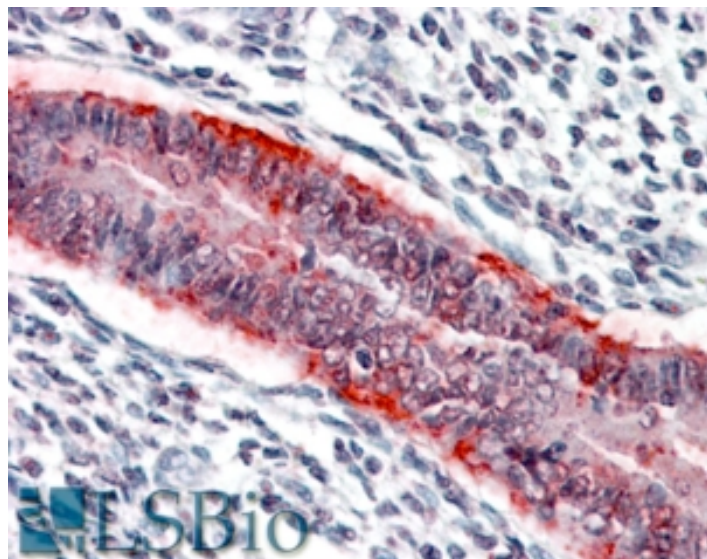


GOAT ANTI-MMP7 ANTIBODY

SKU: EB06891



SPECIFICATIONS

Formulation Supplied at 0.5 mg/ml in Tris saline, 0.02% sodium azide, pH7.3 with 0.5% bovine serum albumin.

Unit Size 100 µg

Storage Instructions Aliquot and store at -20°C. Minimize freezing and thawing.

Synonym / Alias Names matrix metalloproteinase 7|uterine matrilysin|matrix metalloproteinase 7|matrin|PUMP-1|MPSL1|MMP-7|HGNC:7174|matrix metalloproteinase 7 (matrilysin, uterine)|MMP7

Accession ID NP_002414.1

Blocking Peptide EBP06891

Immunogen Peptide with sequence C-QKLYGKRSNSRKK, from the C Terminus of the protein sequence according to NP_002414.1.

Peptide Sequence C-QKLYGKRSNSRKK

Purification Method Purified from goat serum by ammonium sulphate precipitation followed by antigen affinity chromatography using the immunizing peptide.

Shipping Instructions Refrigerated

Predicted Species	Human
Reactive Species	Human
Human Gene ID	4316
Product Grade	https://prod-vector-labs-pimcore-assets.s3.us-east-1.amazonaws.com/assets/products/image/elite_medium.png
IHC Results	In paraffin embedded Human Uterus shows basal staining of an endometrial gland. Recommended concentration, 3-6µg/ml.
ELISA	
Detection Limit	Antibody detection limit dilution 1:64000.
Western Blot	Approx 28kDa band observed in Human Breast, Ovary and Placenta lysates (calculated MW of 29.7kDa according to NP_002414.1). Recommended concentration: 0.03-0.1µg/ml.
Application Type	Pep-ELISA, WB, IHC

DOCUMENTS

- [Data Sheet](#)

GALLERY IMAGES

