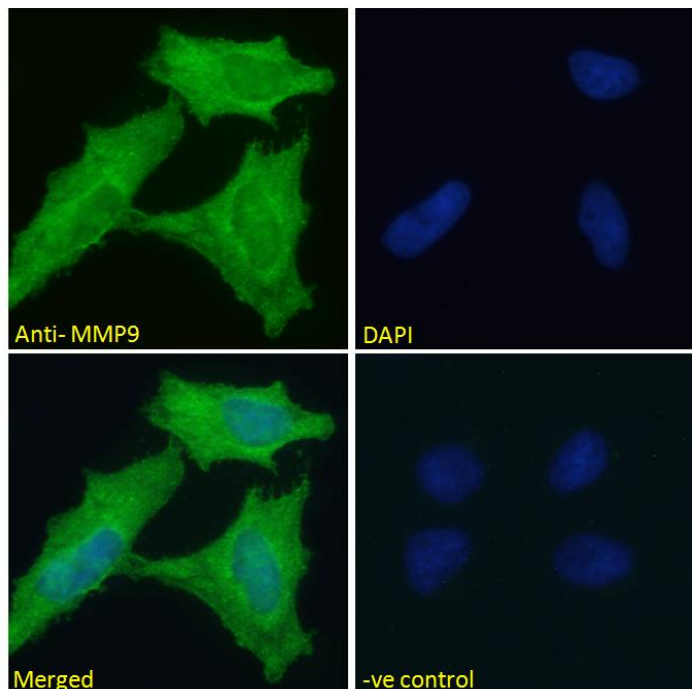


GOAT ANTI-MMP9 ANTIBODY

SKU: EB06890



SPECIFICATIONS

Formulation Supplied at 0.5 mg/ml in Tris saline, 0.02% sodium azide, pH7.3 with 0.5% bovine serum albumin.

Unit Size 100 µg

Storage Instructions Aliquot and store at -20°C. Minimize freezing and thawing.

Synonym / Alias MMP9|matrix metalloproteinase 9|gelatinase B|92kDa gelatinase|92kDa type IV

Names collagenase|HGNC:7176|CLG4B|GELB|92kD type IV collagenase|gelatinaseB|macrophage gelatinase|matrix

Usage metalloproteinase 9 (gelatinase B, 92kD gelatinase, 92kD type IV collagenase)|type V collagenase

Summary Immunofluorescence: Strong expression of the protein seen in the cytoplasm of U2OS and HeLa cells. Recommended concentration: 10µg/ml.

Accession ID NP_004985.2

Blocking Peptide EBP06890

Immunogen Peptide with sequence C-KLDSVFEEPLSKK, from the internal region of the protein sequence according to NP_004985.2.

Peptide Sequence	C-KLDSVFEEPLSKK
Purification Method	Purified from goat serum by ammonium sulphate precipitation followed by antigen affinity chromatography using the immunizing peptide.
Shipping Instructions	Refrigerated
Predicted Species	Human
Reactive Species	Human, Mouse
Human Gene ID	4318
Product Grade	https://prod-vector-labs-pimcore-assets.s3.us-east-1.amazonaws.com/assets/products/image/elite_medium.png
ELISA Detection Limit	Antibody detection limit dilution 1:64000.
Western Blot	Approx.80kDa and 70kDa bands observed in Human Peripheral Blood Mononucleocytes lysates. These bands correspond to the mature forms (http://www.uniprot.org/uniprot/P14780). This protein has a calculated MW of 78.5kDa according to NP_004985.2, but the precursor is usually seen as 92kDa or larger. Recommended concentration: 1-3µg/ml. Approx.75kDa band observed in Mouse Heart lysates (calculated MW of 80.5kDa according to Mouse NP_038627.1). Recommended concentration: 0.1-0.3µg/ml.
Application Type	Pep-ELISA, IF, WB

DOCUMENTS

- [Data Sheet](#)

GALLERY IMAGES

