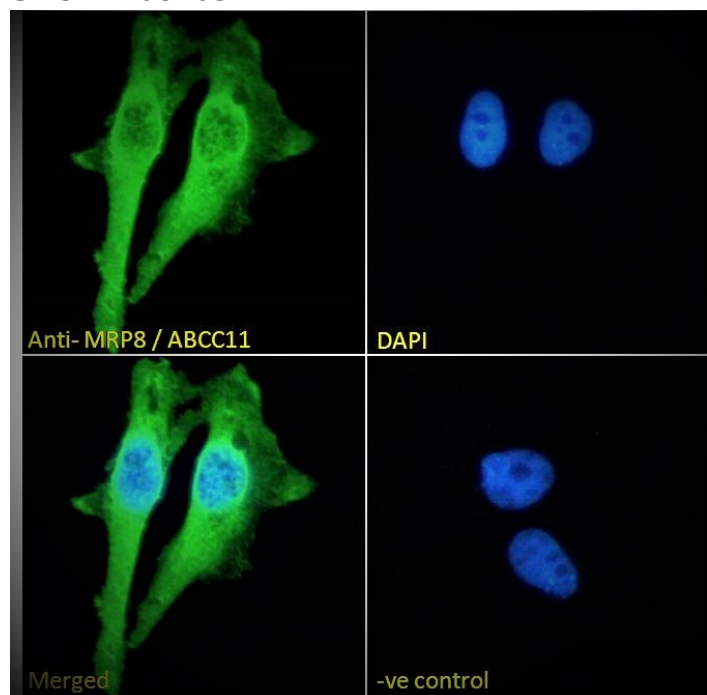


## GOAT ANTI-MRP8 / ABCC11 ANTIBODY

SKU: EB08705



## SPECIFICATIONS

**Formulation** Supplied at 0.5 mg/ml in Tris saline, 0.02% sodium azide, pH7.3 with 0.5% bovine serum albumin.

**Unit Size** 100 µg

**Storage Instructions** Aliquot and store at -20°C. Minimize freezing and thawing.

**Synonym / Alias Names** multi-resistance protein 8|ATP-binding cassette, sub-family C, member 11|ATP-binding cassette protein C11|WW|MRP8|EWWD|ATP-binding cassette, sub-family C (CFTR/MRP), member 11|ATP-binding cassette transporter MRP8|ABCC11

**Usage Summary** **Immunofluorescence:** Strong expression of the protein seen in the membranes and cytoplasm of HeLa cells. Recommended concentration: 10µg/ml. **Flow Cytometry:** Flow cytometric analysis of HeLa cells. Recommended concentration: 10ug/ml.

**Accession ID** NP\_115972.2; NP\_660187.1; NP\_001357425.1

**Blocking Peptide** EBP08705

**Immunogen** Peptide with sequence C-KVVEFDRPEVLRK, from the internal region (near C Terminus) of the protein sequence according to NP\_115972.2; NP\_660187.1; NP\_001357425.1.

<b>Peptide Sequence</b>	C-KVVEFDRPEVLRK
<b>Purification Method</b>	Purified from goat serum by ammonium sulphate precipitation followed by antigen affinity chromatography using the immunizing peptide.
<b>Shipping Instructions</b>	Refrigerated
<b>Predicted Species</b>	Human
<b>Reactive Species</b>	Human
<b>Human Gene ID</b>	85320
<b>Product Grade</b>	<a href="https://prod-vector-labs-pimcore-assets.s3.us-east-1.amazonaws.com/assets/products/image/elite_plus_medium.png">https://prod-vector-labs-pimcore-assets.s3.us-east-1.amazonaws.com/assets/products/image/elite_plus_medium.png</a>
<b>IHC Results</b>	Paraffin embedded Human Breast. Recommended concentration: 3.75µg/ml.
<b>ELISA Detection Limit</b>	Antibody detection limit dilution 1:32000.
<b>Western Blot</b>	Approx 125kDa band observed in Human Testis lysates and in preliminary testing of Breast lysate (calculated MW of 150kDa according to NP_660187.1). This molecular weight is routinely observed by other sources. Recommended concentration: 0.5-1.5µg/ml. Primary incubation 1 hour at room temperature.
<b>Application Type</b>	Pep-ELISA, WB, IHC, IF, FC

## DOCUMENTS

- [Data Sheet](#)

## GALLERY IMAGES

