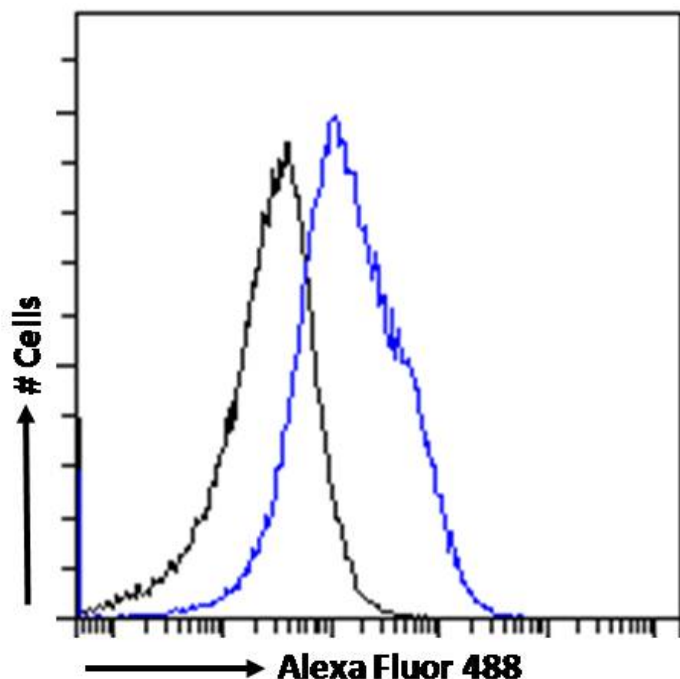


GOAT ANTI-MYD88 ANTIBODY

SKU: EB06667



SPECIFICATIONS

Formulation	Supplied at 0.5 mg/ml in Tris saline, 0.02% sodium azide, pH7.3 with 0.5% bovine serum albumin.
Unit Size	100 µg
Storage	
Instructions	Aliquot and store at -20°C. Minimize freezing and thawing.
Synonym / Alias	myeloid differentiation primary response gene 88 MYD88D myeloid differentiation primary response gene (88) MYD88
Names	
Usage	Immunofluorescence: Strong expression of the protein seen in U2OS and Jurkat cells.
Summary	Recommended concentration: 10µg/ml. <p>Flow Cytometry: Flow cytometric analysis of Jurkat cells. Recommended concentration: 10ug/ml.</p>
Accession ID	NP_001166038.2; NP_002459.3; NP_001166039..2; NP_001361717.1
Blocking Peptide	EBP06667
Immunogen	Peptide with sequence C-IKYKAMKKEFP, from the internal region of the protein sequence according to NP_001166038.2; NP_002459.3; NP_001166039..2; NP_001361717.1.

Product Comments	This antibody is expected to recognize reported isoforms 1, 2, 3 and 9.
Peptide Sequence	C-IKYKAMKKEFP
Purification Method	Purified from goat serum by ammonium sulphate precipitation followed by antigen affinity chromatography using the immunizing peptide.
Shipping Instructions	Refrigerated
Predicted Species	Human, Mouse, Rat, Dog
Reactive Species	Human
Human Gene ID	4615
Mouse Gene ID	17874
Rat Gene ID	301059
Product Grade	https://prod-vector-labs-pimcore-assets.s3.us-east-1.amazonaws.com/assets/products/image/elite_plus_medium.png
IHC Results	Paraffin embedded Human Tonsil. Recommended concentration: 4-6µg/ml.
ELISA	
Detection Limit	Antibody detection limit dilution 1:128000.
Western Blot	Approx 28kDa band observed in Human Spleen lysates (calculated MW of 28.3kDa according to NP_001166039.2). Recommended concentration: 0.3-0.5µg/ml. Primary incubation 1 hour at room temperature.
Application Type	Pep-ELISA, WB, IHC, IF, FC

DOCUMENTS

- [Data Sheet](#)

GALLERY IMAGES

