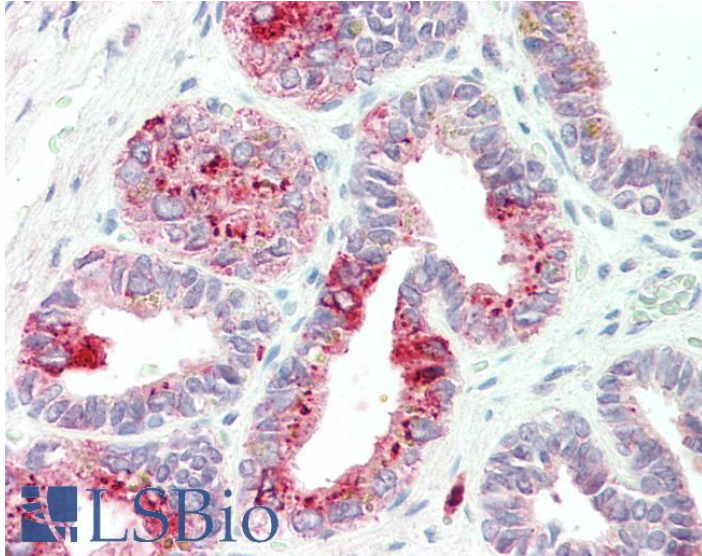




GOAT ANTI-NAT1 (AA272-286) ANTIBODY

SKU: EB12304



SPECIFICATIONS

Formulation	Supplied at 0.5 mg/ml in Tris saline, 0.02% sodium azide, pH7.3 with 0.5% bovine serum albumin.
Unit Size	100 µg
Storage Instructions	Aliquot and store at -20°C. Minimize freezing and thawing.
Synonym / Alias Names	NAT1 N-acetyltransferase 1 (arylamine N-acetyltransferase) AAC1 MNAT NAT-1 NATI N-acetyltransferase type 1 arylamide acetylase 1 arylamine N-acetyltransferase 1 monomorphic arylamine N-acetyltransferase
Accession ID	NP_000653.3; NP_001153647.1
Blocking Peptide	EBP12304
Immunogen	Peptide with sequence C-NISLQRKLVPHGDR, from the C Terminus of the protein sequence according to NP_000653.3; NP_001153647.1.
Product Comments	This antibody is expected to recognize both reported isoforms (NP_000653.3; NP_001153647.1). Reported variants represent identical protein: NP_001153646.1, NP_001153642.1, NP_001153645.1, NP_001153644.1, NP_001153651.1, NP_001153643.1, NP_000653.3. Reported variants represent identical protein: NP_001153647.1, NP_001153648.1.
Peptide Sequence	C-NISLQRKLVPHGDR



Purification Method	Purified from goat serum by ammonium sulphate precipitation followed by antigen affinity chromatography using the immunizing peptide.
Shipping Instructions	Refrigerated
Predicted Species	Human
Reactive Species	Human
Human Gene ID	9
Product Grade	https://prod-vector-labs-pimcore-assets.s3.us-east-1.amazonaws.com/assets/products/image/elite_medium.png
IHC Results	Paraffin embedded Human Urethra. Recommended concentration: 5µg/ml.
ELISA Detection Limit	Antibody detection limit dilution 1:128000.
Western Blot	Approx 30kDa band observed in Human Erythrocytes lysates (calculated MW of 33.9kDa according to NP_000653.3). Recommended concentration: 1-3µg/ml.
Application Type	Pep-ELISA, WB, IHC

DOCUMENTS

- [Data Sheet](#)

GALLERY IMAGES



www.everestbiotech.com

Email: customerservice@vectorlabs.com

Telephone: (650) 697-3600

