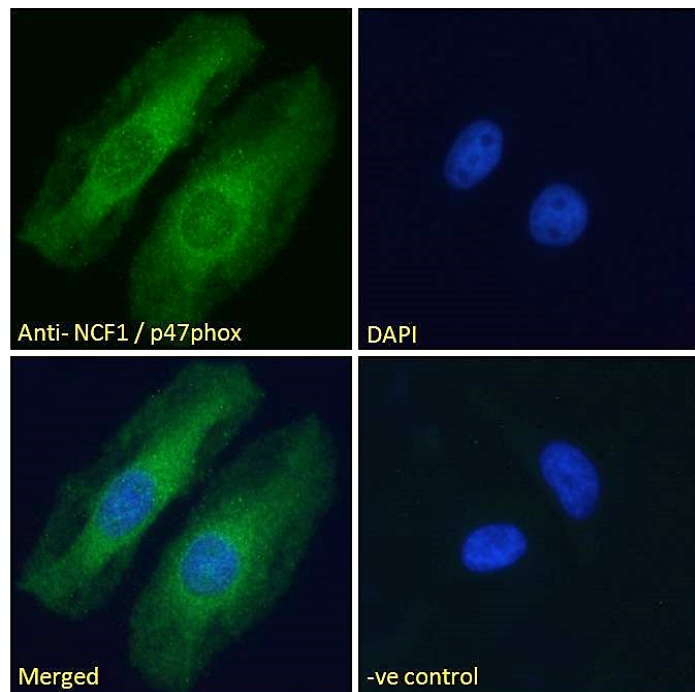


GOAT ANTI-NCF1 / P47PHOX ANTIBODY

SKU: EB05054



SPECIFICATIONS

Formulation Supplied at 0.5 mg/ml in Tris saline, 0.02% sodium azide, pH7.3 with 0.5% bovine serum albumin.

Unit Size 100 µg

Storage Instructions Aliquot and store at -20°C. Minimize freezing and thawing.

Synonym / Alias NADPH oxidase organizer 2|neutrophil cytosolic factor 1 (47kD, chronic granulomatous disease, autosomal

Names 1)|Neutrophil cytosolic factor-1 (47kD)|neutrophil cytosolic factor

1|SH3PXD1A|NOXO2|NCF1A|FLJ79451|p47phox|NCF1

Usage Summary **Immunofluorescence:** Strong expression of the protein seen in the cytoplasm of HeLa cells. Recommended concentration: 10µg/ml. **Flow Cytometry:** Flow cytometric analysis of HeLa cells. Recommended concentration: 10ug/ml.

Accession ID NP_000256.4

Blocking Peptide EBP05054

Immunogen Peptide with sequence C-SESTKRKLASAV, from the C Terminus of the protein sequence according to NP_000256.4.

Peptide Sequence	C-SESTKRKLASAV
Purification Method	Purified from goat serum by ammonium sulphate precipitation followed by antigen affinity chromatography using the immunizing peptide.
Shipping Instructions	Refrigerated
Predicted Species	Human, Mouse, Rat, Pig, Cow
Reactive Species	Human, Mouse, Pig
Human Gene ID	653361
Mouse Gene ID	17969
Rat Gene ID	114553
Product Grade	https://prod-vector-labs-pimcore-assets.s3.us-east-1.amazonaws.com/assets/products/image/elite_plus_medium.png
IHC Results	Paraffin embedded Human Colon, Neutrophils. Recommended concentration: 5µg/ml.
ELISA Detection Limit	Antibody detection limit dilution 1:20000.
Western Blot	Approx 48kDa band observed in lysates of cell lines Daudi, U251 and U937 and in Mouse Thymus, and approx, 50kDa in Pig Spleen lysates (calculated MW of 44.7kDa according to Human NP_000256.4, 46.0kDa according to Mouse NP_001272966.1 and 45.3kDa according to Pig NP_001106691.1). This molecular weight is routinely observed by other sources. Recommended concentration: 0.01-1µg/ml. Primary incubation 1 hour at room temperature. Negative Control: A431 cell lysate. Preliminary testing was unsuccessful on Rat Spleen and Thymus for this particular batch.
Application Type	Pep-ELISA, WB, IHC, IF, FC

DOCUMENTS

- [Safety Data Sheet](#)

GALLERY IMAGES

