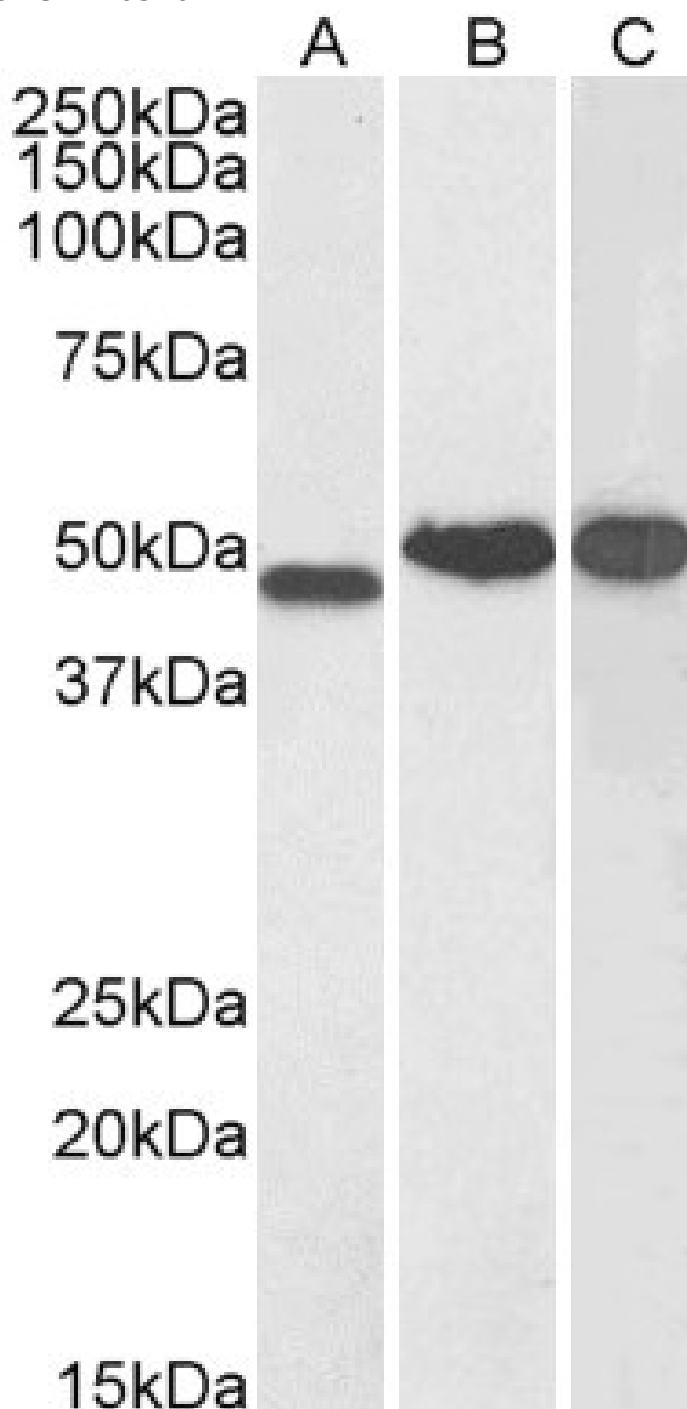


GOAT ANTI-NDRG1 ANTIBODY

SKU: EB05707



SPECIFICATIONS

Formulation	Supplied at 0.5 mg/ml in Tris saline, 0.02% sodium azide, pH7.3 with 0.5% bovine serum albumin.
Unit Size	100 µg
Storage Instructions	Aliquot and store at -20°C. Minimize freezing and thawing.
Synonym / Alias Names	DRG-1 tunicamycin-responsive protein reducing agents and tunicamycin-responsive protein protein regulated by oxygen-1 nickel-specific induction protein Cap43 differentiation-related gene 1 protein N-myc downstream regulated gene 1 protein TDD5 TARG1 RTP RIT42 PROXY1 NMSL NDR1 HMSNL GC4 DRG1 CMT4D CAP43, N-myc downstream regulated gene 1 NDRG1
Accession ID	NP_006087.2
Blocking Peptide	EBP05707
Immunogen	Peptide with sequence GNSAGPKSMEVSC, from the C Terminus of the protein sequence according to NP_006087.2.
Product Comments	The variants (NP_006087.2; NP_001128714.1) encode the same protein
Peptide Sequence	GNSAGPKSMEVSC
Purification Method	Purified from goat serum by ammonium sulphate precipitation followed by antigen affinity chromatography using the immunizing peptide.
Shipping Instructions	Refrigerated
Predicted Species	Human
Reactive Species	Human
Human Gene ID	10397
Mouse Gene ID	17990
Product Grade	https://prod-vector-labs-pimcore-assets.s3.us-east-1.amazonaws.com/assets/products/image/elite_medium.png
IHC Results	In paraffin embedded Human hepatocellular carcinoma shows strong labeling of membranes and weaker staining of cytoplasm. These observations are consistent with those obtained by different antibodies. Recommended concentration: 0.5-2µg/ml. Paraffin embedded Human Prostate and Colon. Recommended concentration: 2.5µg/ml.
ELISA Detection Limit	Antibody detection limit dilution 1:32000.

**Western
Blot**

Approx 48kDa band observed in Human Kidney, and approx 50kDa band observed in Human Brain (Cerebellum) and Testis lysates (calculated MW of 42.8kDa according to NP_006087.2). This molecular weight is routinely observed by other sources. Recommended concentration: 0.1-0.3µg/ml. Primary incubation was 1 hour. Preliminary testing was unsuccessful on Mouse and Rat for this particular batch.

**Application
Type**

Pep-ELISA, WB, IHC

DOCUMENTS

- [Data Sheet](#)

GALLERY IMAGES

