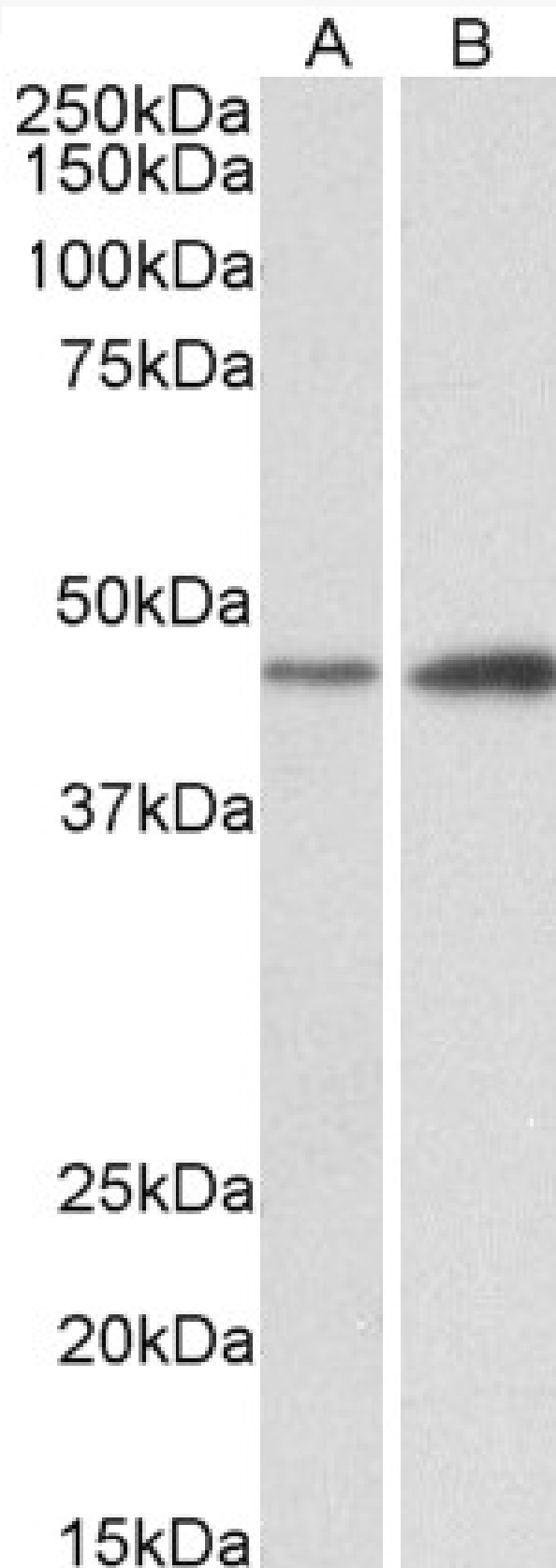


GOAT ANTI-NDRG2 ANTIBODY

SKU: EB10793



SPECIFICATIONS

Formulation	Supplied at 0.5 mg/ml in Tris saline, 0.02% sodium azide, pH7.3 with 0.5% bovine serum albumin.
Unit Size	100 µg
Storage Instructions	Aliquot and store at -20°C. Minimize freezing and thawing.
Synonym / Alias Names	NDRG2 NDRG family member 2 DKFZp781G1938 FLJ25522 KIAA1248 SYLD N-myc downstream regulator 2 NDR1-related protein NDR2 OTTHUMP00000164405 OTTHUMP00000164407 OTTHUMP00000164408 cytoplasmic protein Ndr1 protein NDRG2 syld709
Accession ID	NP_963293.1
Blocking Peptide	EBP10793
Immunogen	Peptide with sequence KEAELAARILLDQGQ-C, from the N Terminus (near) of the protein sequence according to NP_963293.1.
Product Comments	This antibody is expected to recognize reported isoform a (NP_963293.1) only. Reported variants represent identical protein: NP_963831.1, NP_963293.1, NP_963834.1, NP_963833.1.
Peptide Sequence	KEAELAARILLDQGQ-C
Purification Method	Purified from goat serum by ammonium sulphate precipitation followed by antigen affinity chromatography using the immunizing peptide.
Shipping Instructions	Refrigerated
Predicted Species	Human, Mouse, Rat, Dog
Reactive Species	Human, Mouse, Rat
Human Gene ID	57447
Mouse Gene ID	29811
Rat Gene ID	171114
Product Grade	https://prod-vector-labs-pimcore-assets.s3.us-east-1.amazonaws.com/assets/products/image/elite_medium.png
IHC Results	Paraffin embedded Human Adrenal Gland. Recommended concentration: 3.75µg/ml.
ELISA	
Detection Limit	Antibody detection limit dilution 1:16000.
Western Blot	Approx 45kDa band observed in Human Brain (Temporal Cortex), Mouse and Rat Brain lysates (calculated MW of 40.8kDa according to NP_963293.1). Recommended concentration: 0.1-0.3µg/ml. Primary incubation was 1 hour.
Application Type	Pep-ELISA, WB, IHC

DOCUMENTS

- [Data Sheet](#)

GALLERY IMAGES

