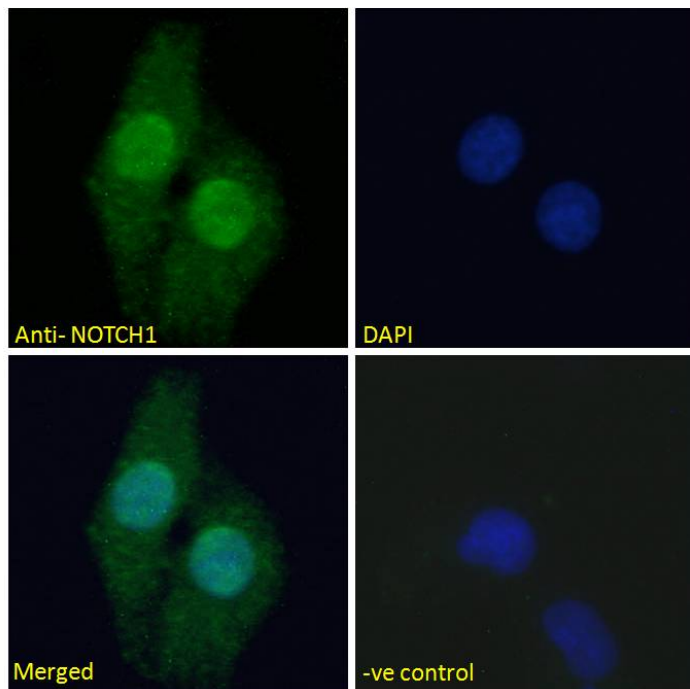


GOAT ANTI-NOTCH1 ANTIBODY

SKU: EB07441



SPECIFICATIONS

Formulation Supplied at 0.5 mg/ml in Tris saline, 0.02% sodium azide, pH7.3 with 0.5% bovine serum albumin.

Unit Size 100 µg

Storage Instructions Aliquot and store at -20°C. Minimize freezing and thawing.

Synonym / Alias translocation-associated notch protein TAN-1|notch1|neurogenic locus notch homolog protein 1|Notch (Drosophila) homolog 1 (translocation-associated)|hN1|TAN1|translocation-associated (Drosophila)|Notch homolog 1|NOTCH1

Usage Immunofluorescence: Strong expression of the protein seen in the nucleus of U2OS cells.

Summary Recommended concentration: 5µg/ml.

Accession ID NP_060087.2

Blocking Peptide EBP07441

Immunogen Peptide with sequence C-DLKARRKKSQDGK, from the internal region of the protein sequence according to NP_060087.2.

Peptide Sequence	C-DLKARRKKSQDGK
Purification Method	Purified from goat serum by ammonium sulphate precipitation followed by antigen affinity chromatography using the immunizing peptide.
Shipping Instructions	Refrigerated
Predicted Species	Human
Reactive Species	Human
Human Gene ID	4851
Product Grade	https://prod-vector-labs-pimcore-assets.s3.us-east-1.amazonaws.com/assets/products/image/elite_medium.png
ELISA Detection Limit	Antibody detection limit dilution 1:64000.
Application Type	Pep-ELISA, IF

DOCUMENTS

- [Data Sheet](#)

GALLERY IMAGES

