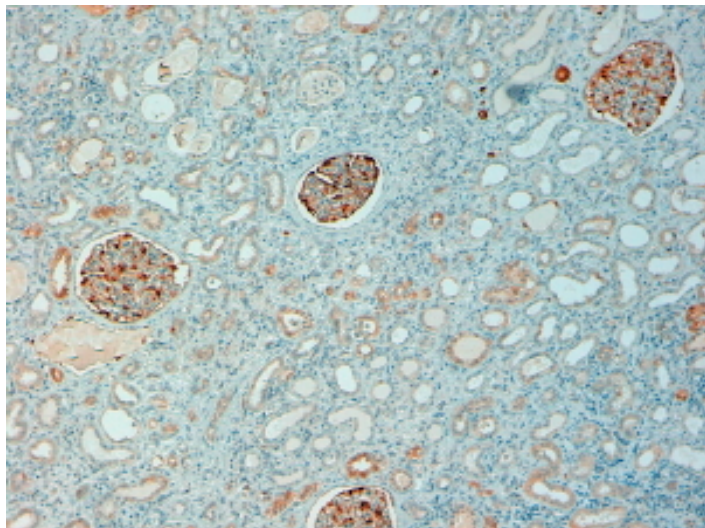


GOAT ANTI-NQO1 ANTIBODY

SKU: EB05370



SPECIFICATIONS

Formulation	Supplied at 0.5 mg/ml in Tris saline, 0.02% sodium azide, pH7.3 with 0.5% bovine serum albumin.
Unit Size	100 µg
Storage	Aliquot and store at -20°C. Minimize freezing and thawing.
Instructions	
Synonym / Alias Names	quinone reductase 1 phyloquinone reductase menadione reductase dioxin-inducible 1 diaphorase (NADH/NADPH) (cytochrome b-5 reductase) azoreductase NAD(P)H:quinone oxireductase NAD(P)H menadione oxidoreductase 1, dioxin-inducible NAD(P)H:Quinone acceptor oxidoreductase type 1 NAD(P)H menadione oxidoreductase 1, dioxin-inducible DT-diaphorase NAD(P)H:menadione oxidoreductase 1, dioxin-inducible 1 diaphorase (NADH/NADPH) (cytochrome b-5 reductase) diaphorase (NADH/NADPH) diaphorase-4 NMORI NMOR1 DIA4 DHQU QR1 DTD NAD(P)H dehydrogenase, quinone 1 NQO1
Usage Summary	Immunofluorescence: Expression of the protein seen in the cytoplasm and nucleus of HepG2 cells. Recommended concentration: 10µg/ml.
Accession ID	NP_000894.1; NP_001020604.1; NP_001020605.1
Blocking Peptide	EBP05370
Immunogen	Peptide with sequence C-SIPTDNQIKARK, from the C Terminus of the protein sequence according to NP_000894.1; NP_001020604.1; NP_001020605.1.
Product Comments	This products is expected to recognize all three reported isoforms (NP_000894.1, NP_001020604.1 and NP_001020605.1).

Peptide Sequence	C-SIPTDNQIKARK
Purification Method	Purified from goat serum by ammonium sulphate precipitation followed by antigen affinity chromatography using the immunizing peptide.
Shipping Instructions	Refrigerated
Predicted Species	Human, Rat, Dog, Pig
Reactive Species	Human, Rat
Human Gene ID	1728
Mouse Gene ID	18104
Product Grade	https://prod-vector-labs-pimcore-assets.s3.us-east-1.amazonaws.com/assets/products/image/elite_plus_medium.png
IHC Results	In paraffin embedded Human Kidney shows specific staining of the glomeruli. Recommended concentration: 2-4µg/ml.
ELISA Detection Limit	Antibody detection limit dilution 1:64000.
Western Blot	Approx. 30kDa band observed in lysates of cell lines U251 and HepG2 and in Human Kidney, Lung and Duodenum lysates, and approx. 30-32kDa band in Rat Kidney, Lung and Duodenum lysates (calculated MW of 30.9kDa according to Human NP_000894.1 and Rat NP_058696.2). Recommended concentration: 0.1-0.3µg/ml. Primary incubation 1 hour at room temperature.
Application Type	Pep-ELISA, WB, IF, IHC

DOCUMENTS

- [Data Sheet](#)

GALLERY IMAGES

