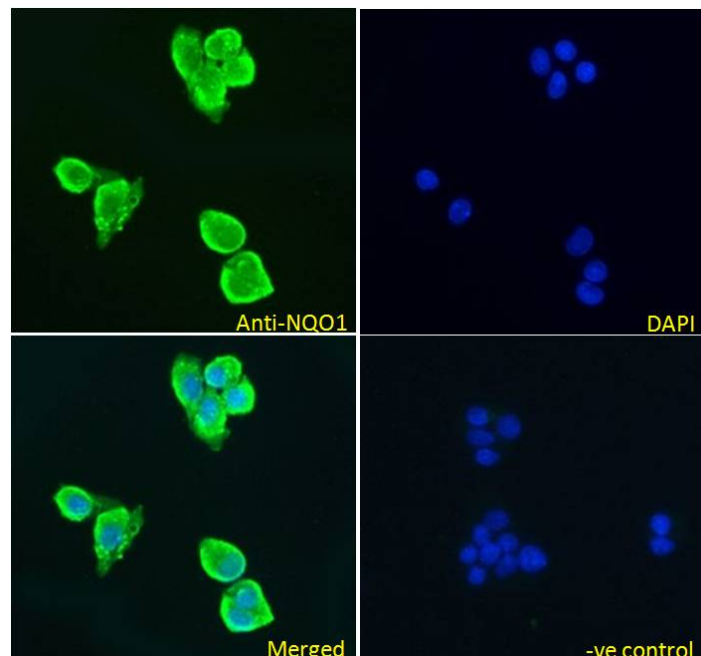


GOAT ANTI-NQO1 (ISOFORM A) ANTIBODY

SKU: EB10772



SPECIFICATIONS

Formulation	Supplied at 0.5 mg/ml in Tris saline, 0.02% sodium azide, pH7.3 with 0.5% bovine serum albumin.
Unit Size	100 µg
Storage	
Instructions	Aliquot and store at -20°C. Minimize freezing and thawing.
Synonym / Alias	NAD(P)H:qui NAD(P)H:quinone oxidoreductase 1 NAD(P)H:menadione oxidoreductase 1 NAD(P)H:Quinone acceptor oxidoreductase type 1 DT-diaphorase QR1 NMOR1 NMOR1 DTD DIA4 DHQU NAD(P)H dehydrogenase, quinone 1 NQO1
Names	
Usage	Immunofluorescence: Strong expression of the protein seen in the cytoplasm of HepG2 cells.
Summary	Recommended concentration: 5µg/ml.
Accession ID	NP_000894.1
Blocking Peptide	EBP10772
Immunogen	Peptide with sequence C-DKGPFRRSKKAVLS, from the internal region of the protein sequence according to NP_000894.1.
Product Comments	This antibody is expected to recognize reported isoform a (NP_000894.1) only.

Peptide Sequence	C-DKGPFRSKKAVLS
Purification Method	Purified from goat serum by ammonium sulphate precipitation followed by antigen affinity chromatography using the immunizing peptide.
Shipping Instructions	Refrigerated
Predicted Species	Human, Dog, Pig, Cow
Reactive Species	Human
Human Gene ID	1728
Product Grade	https://prod-vector-labs-pimcore-assets.s3.us-east-1.amazonaws.com/assets/products/image/elite_plus_medium.png
IHC Results	Paraffin embedded Human Small Intestine. Recommended concentration: 3.75µg/ml.
ELISA	
Detection Limit	Antibody detection limit dilution 1:32000.
Western Blot	Approx 30kDa band observed in Human Kidney lysates (calculated MW of 30.9kDa according to NP_000894.1). Recommended concentration: 0.3-1µg/ml. Primary incubation was 1 hour.
Application Type	Pep-ELISA, WB, IF, IHC

DOCUMENTS

- [Data Sheet](#)

GALLERY IMAGES

