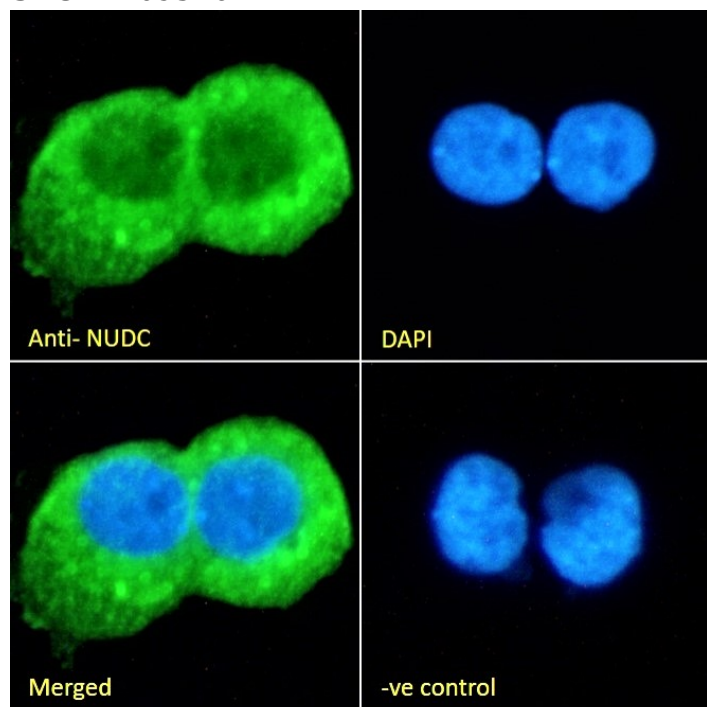


## GOAT ANTI-NUDC ANTIBODY

SKU: EB09516



## SPECIFICATIONS

**Formulation** Supplied at 0.5 mg/ml in Tris saline, 0.02% sodium azide, pH7.3 with 0.5% bovine serum albumin.

**Unit Size** 100 µg

**Storage Instructions** Aliquot and store at -20°C. Minimize freezing and thawing.

**Synonym / Alias Names** nuclear distribution gene C homolog|OTTHUMP00000004405|NPD011|MNUDC|HNUDC|nuclear distribution gene C homolog (A. nidulans)|NUDC

**Usage Summary** **Immunofluorescence:** Strong expression of the protein seen in the cytoplasm of A431 cells. Recommended concentration: 10µg/ml.

**Accession ID** NP\_006591.1

**Blocking Peptide** EBP09516

**Immunogen** Peptide with sequence C-PNLGNGADLPNYR, from the internal region of the protein sequence according to NP\_006591.1.

<b>Peptide Sequence</b>	C-PNLGNGADLPNYR
<b>Purification Method</b>	Purified from goat serum by ammonium sulphate precipitation followed by antigen affinity chromatography using the immunizing peptide.
<b>Shipping Instructions</b>	Refrigerated
<b>Predicted Species</b>	Human, Mouse, Rat, Dog, Cow
<b>Reactive Species</b>	Human, Rat
<b>Human Gene ID</b>	10726
<b>Mouse Gene ID</b>	18221
<b>Rat Gene ID</b>	29648
<b>Product Grade</b>	<a href="https://prod-vector-labs-pimcore-assets.s3.us-east-1.amazonaws.com/assets/products/image/elite_medium.png">https://prod-vector-labs-pimcore-assets.s3.us-east-1.amazonaws.com/assets/products/image/elite_medium.png</a>
<b>ELISA Detection Limit</b>	Antibody detection limit dilution 1:32000.
<b>Western Blot</b>	Approx 40kDa band observed in lysates of cell lines HeLa, HepG2 and K562, and approx. 38kDa in lysates of cell line KNRK (calculated MW of 38.2kDa according to Human NP_006591.1) and 38.4kDa according to Rat NP_058967.1). Recommended concentration: 0.3-1µg/ml. Primary incubation 1 hour at room temperature.
<b>Application Type</b>	Pep-ELISA, WB, IF

## DOCUMENTS

- [Data Sheet](#)

## GALLERY IMAGES

