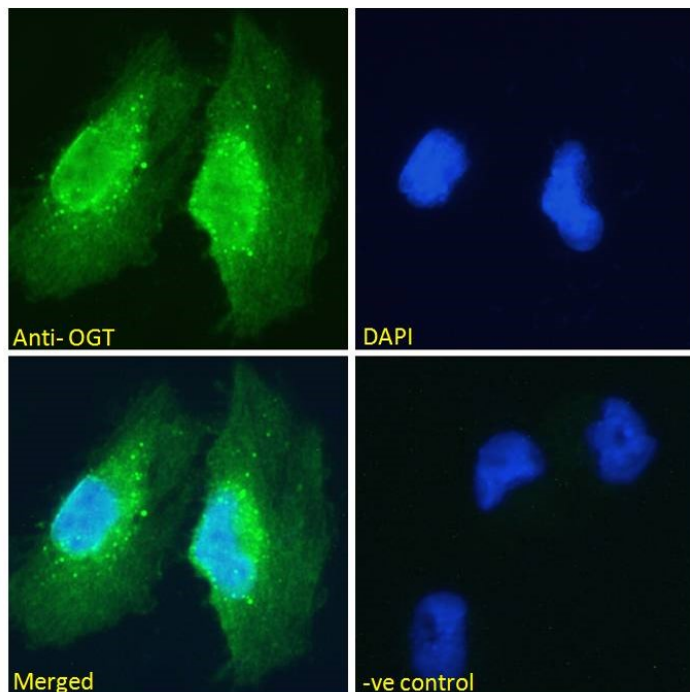


GOAT ANTI-OGT ANTIBODY

SKU: EB07626



SPECIFICATIONS

Formulation Supplied at 0.5 mg/ml in Tris saline, 0.02% sodium azide, pH7.3 with 0.5% bovine serum albumin.

Unit Size 100 µg

Storage Instructions Aliquot and store at -20°C. Minimize freezing and thawing.

Synonym / Alias Names uridinediphospho-N-acetylglucosamine:polypeptide beta-N-acetylglucosaminyl transferase|O-GlcNAc transferase p110 subunit O-linked GlcNAc transferase|O-GLCNAC|MGC22921|HRNT1|FLJ23071|O-linked N-acetylglucosamine (GlcNAc) transferase (UDP-N-acetylglucosamine:polypeptide-N-acetylglucosaminyl transferase)|OGT

Usage Summary **Immunofluorescence:** Strong expression of the protein seen in the nucleus of HeLa, U2OS and Glioblastoma U251 cells. Recommended concentration: 10µg/ml. **Flow Cytometry:** Flow cytometric analysis of HEK293 cells. Recommended concentration: 10ug/ml.

Accession ID NP_858058.1; NP_858059.1

Blocking Peptide EBP07626

Immunogen Peptide with sequence C-YEHPKDLKLS DGR, from the internal region of the protein sequence according to NP_858058.1; NP_858059.1.

Product Comments	This antibody is expected to recognise both reported isoforms (NP_858058.1 and NP_858059.1)
Peptide Sequence	C-YEHPKDLKLSGDGR
Purification Method	Purified from goat serum by ammonium sulphate precipitation followed by antigen affinity chromatography using the immunizing peptide.
Shipping Instructions	Refrigerated
Predicted Species	Human, Mouse, Rat, Dog, Cow
Reactive Species	Human, Rat
Human Gene ID	8473
Mouse Gene ID	108155
Rat Gene ID	26295
Product Grade	https://prod-vector-labs-pimcore-assets.s3.us-east-1.amazonaws.com/assets/products/image/elite_plus_medium.png
IHC Results	Paraffin embedded Human Brain (Cortex). Recommended concentration: 5µg/ml.
ELISA	
Detection Limit	Antibody detection limit dilution 1:64000.
Western Blot	Approx 110kDa band observed in Rat Pancreas lysates calculated MW of 116kDa according to NP_858058.2). An additional band of unknown identity was also consistently observed at 60kDa. This band was successfully blocked by incubation with the immunising peptide. Recommended concentration: 0.05-0.2µg/ml. Primary incubation 1 hour at room temperature. Preliminary testing was unsuccessful on Mouse Brain for this particular batch.
Application Type	Pep-ELISA, WB, IHC, IF, FC

DOCUMENTS

- [Data Sheet](#)

GALLERY IMAGES

