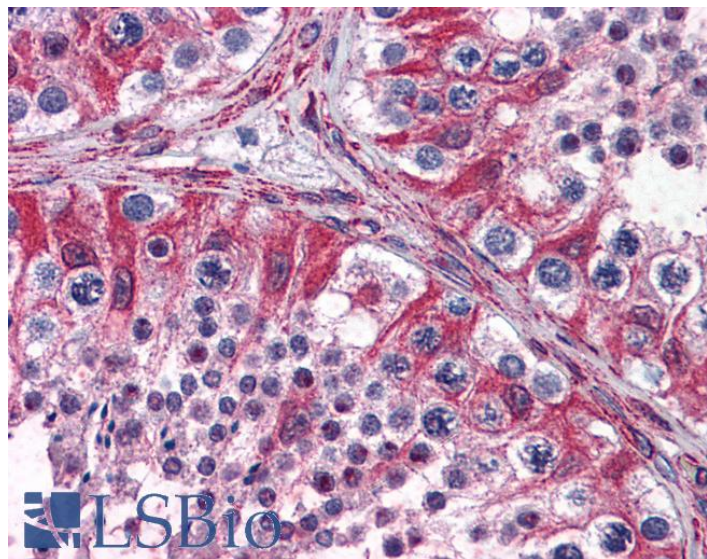


GOAT ANTI-PACE4 ANTIBODY

SKU: EB08962



SPECIFICATIONS

Formulation	Supplied at 0.5 mg/ml in Tris saline, 0.02% sodium azide, pH7.3 with 0.5% bovine serum albumin.
Unit Size	100 µg
Storage	Aliquot and store at -20°C. Minimize freezing and thawing.
Instructions	
Synonym / Alias	subtilisin/kexin-like protease PACE4 subtilisin-like protease subtilisin-like proprotein convertase 4 paired basic amino acid cleaving system 4 SPC4 PACE4 proprotein convertase subtilisin/kexin type 6 PCSK6
Names	
Accession ID	NP_002561.1; NP_612192.1; NP_612195.1; NP_612197.1; NP_612196.1; NP_612198.2; NP_612193.1; NP_612194.1
Blocking Peptide	EBP08962
Immunogen	Peptide with sequence PDCEPGTYFDSE, from the internal region of the protein sequence according to NP_002561.1; NP_612192.1; NP_612195.1; NP_612197.1; NP_612196.1; NP_612198.2; NP_612193.1; NP_612194.1.
Product Comments	This antibody is expected to recognize reported isoforms a, b, g, h (NP_002561.1; NP_612192.1; NP_612193.1; NP_612194.1 resp.).
Peptide Sequence	PDCEPGTYFDSE

Purification Method	Purified from goat serum by ammonium sulphate precipitation followed by antigen affinity chromatography using the immunizing peptide.
Shipping Instructions	Refrigerated
Predicted Species	Human, Mouse, Rat
Reactive Species	Human
Human Gene ID	5046
Mouse Gene ID	18553
Rat Gene ID	25507
Product Grade	https://prod-vector-labs-pimcore-assets.s3.us-east-1.amazonaws.com/assets/products/image/elite_medium.png
IHC Results	Paraffin embedded Human Testis and Skeletal Muscle. Recommended concentration: 3.75µg/ml.
ELISA	
Detection Limit	Antibody detection limit dilution 1:8000.
Western Blot	Preliminary experiments gave an approx. 70kDa band in Human, Mouse and Rat Liver lysates after 1µg/ml antibody staining. Please note that currently we cannot find an explanation in the literature for the band we observe given the calculated sizes of NP_002561.1, NP_612192.1, NP_612193.1 and NP_612194.1. The 70kDa band was successfully blocked by incubation with the immunizing peptide.
Application Type	Pep-ELISA, IHC

DOCUMENTS

- [Data Sheet](#)

GALLERY IMAGES

