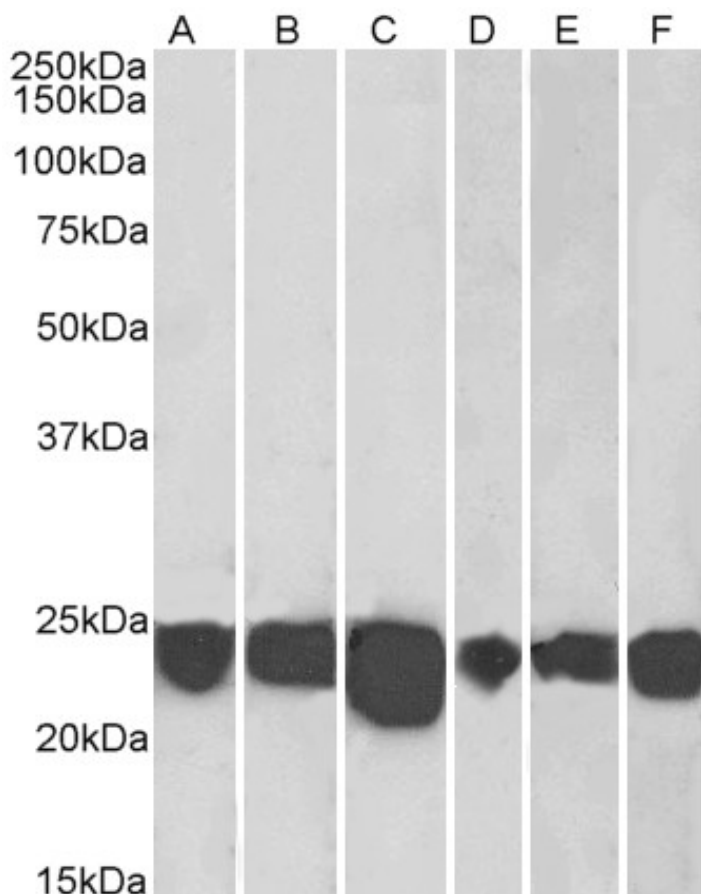


GOAT ANTI-PARK7 / DJ-1 ANTIBODY

SKU: EB05880



SPECIFICATIONS

Formulation Supplied at 0.5 mg/ml in Tris saline, 0.02% sodium azide, pH7.3 with 0.5% bovine serum albumin.

Unit Size 100 µg

Storage Instructions Aliquot and store at -20°C. Minimize freezing and thawing.

Synonym / HEL-S-67p|epididymis secretory sperm binding protein Li 67p|protein DJ-1|Parkinson disease protein

Alias 7|FLJ92274|FLJ34360|FLJ27376|CTA-215D11.1|oncogene DJ1|Parkinson disease (autosomal recessive, early onset)

Names 7|DJ-1|DJ1|PARK7

Usage Immunofluorescence: Strong expression of the protein seen around the nucleus. Dividing cells

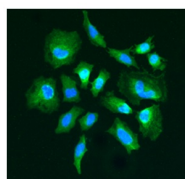
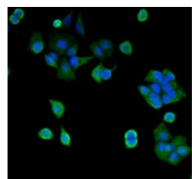
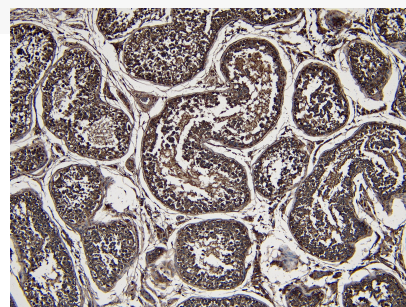
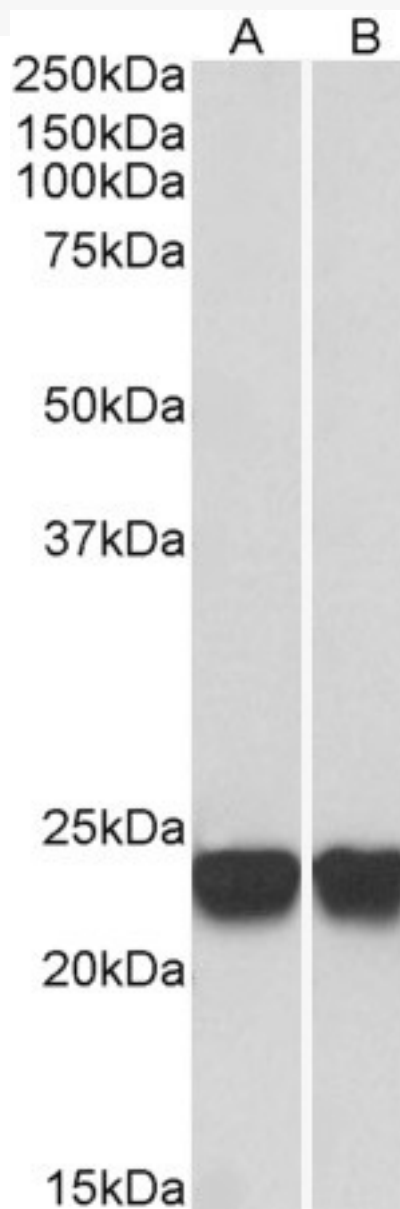
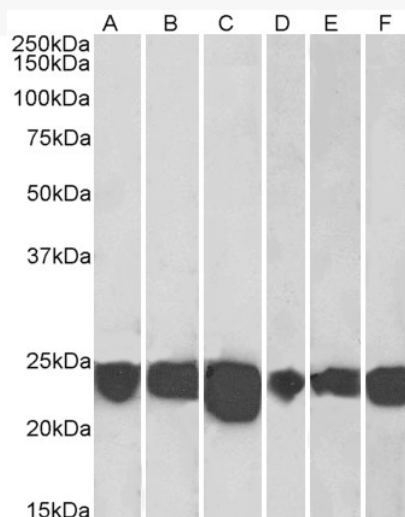
Summary appear to show enhanced expression. Recommended concentration: 5µg/ml.

| | |
|------------------------------|---|
| Accession ID | NP_009193.2 |
| Blocking Peptide | EBP05880 |
| Immunogen | Peptide with sequence C-AAQVKAPLVKLD, from the C Terminus of the protein sequence according to NP_009193.2. |
| Product Comments | Reported variants (NP_001116849.1; NP_009193.2) represent the same protein. |
| Peptide Sequence | C-AAQVKAPLVKLD |
| Purification Method | Purified from goat serum by ammonium sulphate precipitation followed by antigen affinity chromatography using the immunizing peptide. |
| Shipping Instructions | Refrigerated |
| Predicted Species | Human, Mouse, Rat |
| Reactive Species | Human, Mouse, Rat |
| Human Gene ID | 11315 |
| Mouse Gene ID | 57320 |
| Rat Gene ID | 117287 |
| Product Grade | https://prod-vector-labs-pimcore-assets.s3.us-east-1.amazonaws.com/assets/products/image/elite_plus_medium.png |
| IHC Results | Paraffin embedded Human Testis. Recommended concentration: 7µg/ml. |
| ELISA | |
| Detection Limit | Antibody detection limit dilution 1:128000. |
| Western Blot | Approx 24kDa band observed in lysates of cell lines HeLa and Jurkat and of Human Brain (Cerebellum, Hippocampus, Frontal Cortex) and rodent Brain lysates (calculated MW of 19.9kDa according to NP_001116849.1 and of NP_009193.2). Recommended concentration: 0.05-0.1µg/ml. Primary incubation was 1 hour. |
| Application Type | Pep-ELISA, WB, IF, IHC |

DOCUMENTS

- [Data Sheet](#)

GALLERY IMAGES



A

B