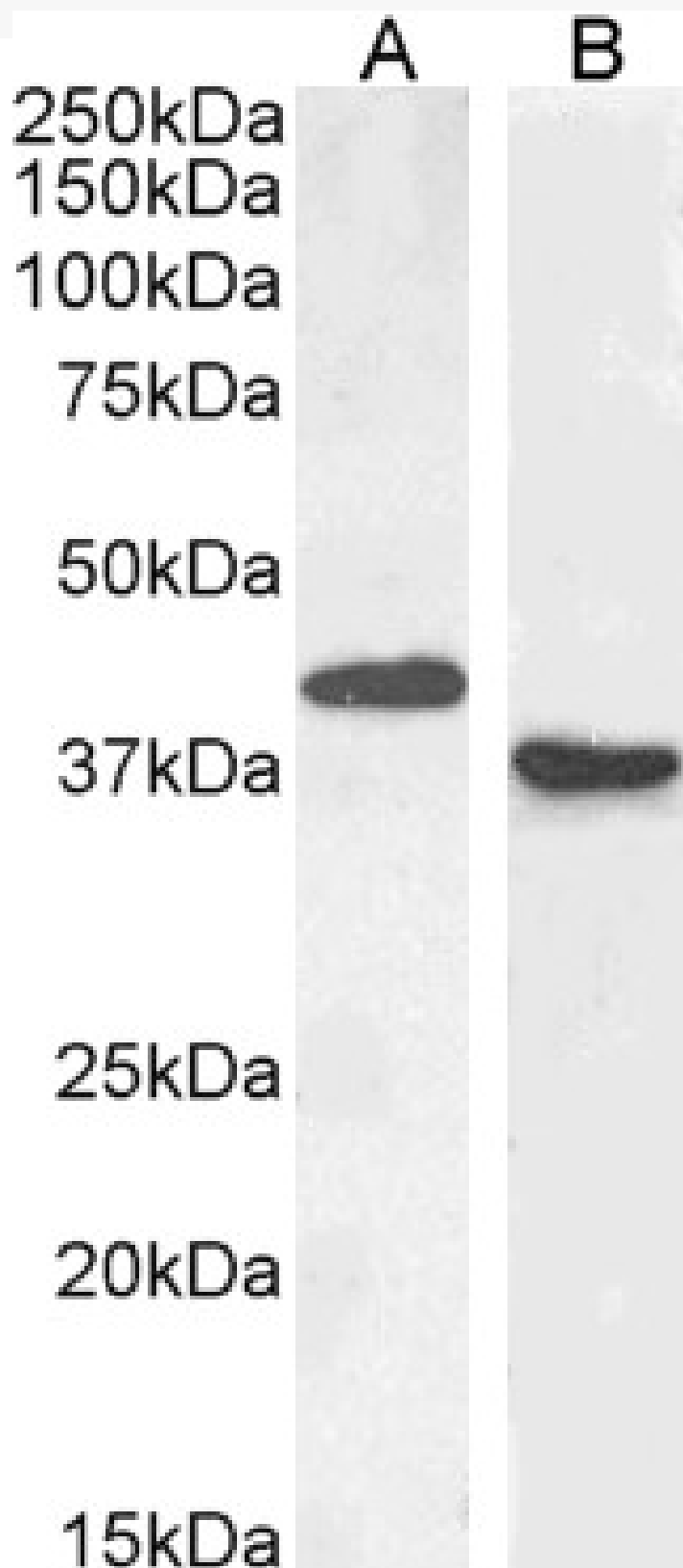


GOAT ANTI-PAX5 / BSAP ANTIBODY

SKU: EB05566



SPECIFICATIONS

Formulation	Supplied at 0.5 mg/ml in Tris saline, 0.02% sodium azide, pH7.3 with 0.5% bovine serum albumin.
Unit Size	100 µg
Storage Instructions	Aliquot and store at -20°C. Minimize freezing and thawing.
Synonym / Alias Names	transcription factor PAX 5 paired box homeotic gene 5 B-cell lineage specific activator B cell specific activator protein paired box 5 paired box homeotic gene 5 (B-cell lineage specific activator protein) B-cell lineage specific activator protein paired box gene 5 (B-cell lineage specific activator protein) BSAP PAX5
Usage	Immunofluorescence: Strong expression of the protein seen in the nuclei of Jurkat cells.
Summary	Recommended concentration: 10µg/ml.
Accession ID	NP_057953.1
Blocking Peptide	EBP05566
Immunogen	Peptide with sequence DLEKNYTPRTSR-C, from the N Terminus of the protein sequence according to NP_057953.1.
Peptide Sequence	DLEKNYTPRTSR-C
Purification Method	Purified from goat serum by ammonium sulphate precipitation followed by antigen affinity chromatography using the immunizing peptide.
Shipping Instructions	Refrigerated
Predicted Species	Human, Mouse
Reactive Species	Human, Mouse, Rat
Human Gene ID	5079
Mouse Gene ID	18507
Product Grade	https://prod-vector-labs-pimcore-assets.s3.us-east-1.amazonaws.com/assets/products/image/elite_medium.png
ELISA Detection Limit	Antibody detection limit dilution 1:64000.
Western Blot	Approx 38kDa band observed in Human Lymph and Rat Spleen lysates, and approx.40kDa in Mouse Spleen lysates (calculated MW of 42.1kDa according to Human NP_057953.1 and 42.2kDa according to Mouse NP_032808.1 and Rat NP_001102731.1). Recommended concentration: 0.1-0.5µg/ml.
Application Type	Pep-ELISA, WB, IF

DOCUMENTS

- [Data Sheet](#)

GALLERY IMAGES

