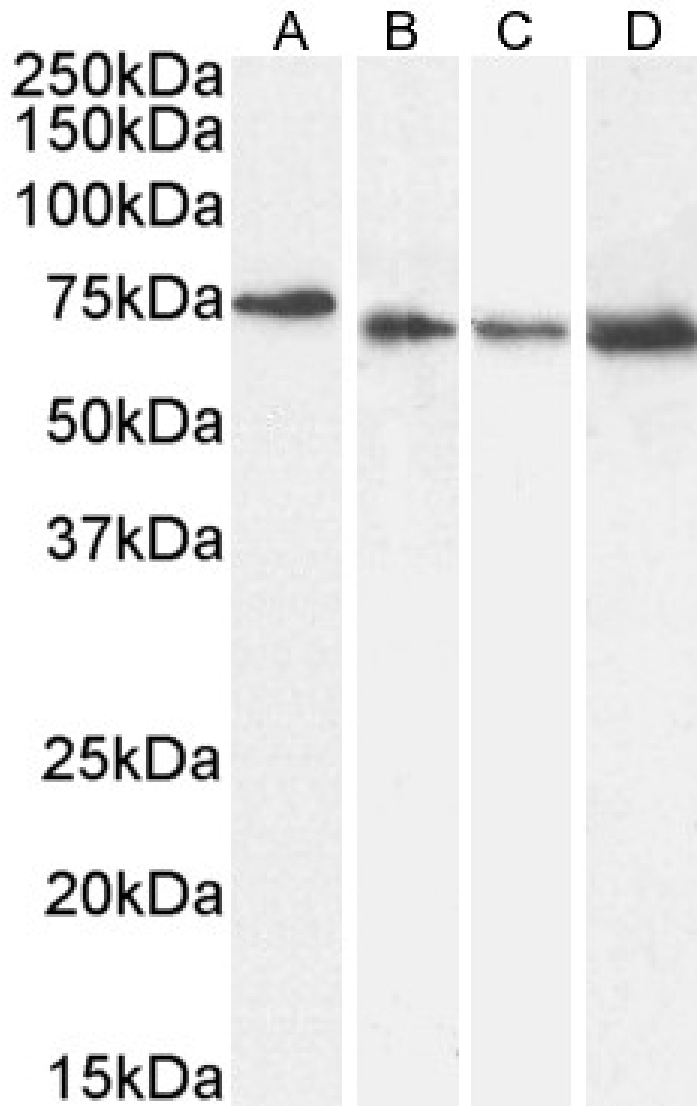




# GOAT ANTI-PERICENTRIN 1 / NUP85 ANTIBODY

SKU: EB06201



## SPECIFICATIONS

**Formulation** Supplied at 0.5 mg/ml in Tris saline, 0.02% sodium azide, pH7.3 with 0.5% bovine serum albumin.

**Unit Size** 100 µg



<b>Storage Instructions</b>	Aliquot and store at -20°C. Minimize freezing and thawing.
<b>Synonym / Alias Names</b>	nucleoporin 85 Nup75 FLJ12549 nucleoporin 85kDa nucleoporin Nup75 frount PCNT PCN PCNT1 pericentrin 1 NUP85
<b>Usage Summary</b>	<p>&lt;strong&gt;Immunofluorescence:&lt;/strong&gt; Strong expression of the protein seen in the nuclei and cytoplasm) of MCF7 and U2OS cells. Recommended concentration: 10µg/ml. &lt;p&gt;&lt;strong&gt;Flow Cytometry:&lt;/strong&gt; Flow cytometric analysis of MCF7 cells. Recommended concentration: 10ug/ml.&lt;/p&gt;</p>
<b>Accession ID</b>	NP_079120.1; NP_001290205.1; NP_001317401.1
<b>Blocking Peptide</b>	EBP06201
<b>Immunogen</b>	Peptide with sequence C-ARAIIREGSLEGS, from the C Terminus of the protein sequence according to NP_079120.1; NP_001290205.1; NP_001317401.1.
<b>Product Comments</b>	This antibody is expected to recognise all reported isoforms.
<b>Peptide Sequence</b>	C-ARAIIREGSLEGS
<b>Purification Method</b>	Purified from goat serum by ammonium sulphate precipitation followed by antigen affinity chromatography using the immunizing peptide.
<b>Shipping Instructions</b>	Refrigerated
<b>Predicted Species</b>	Human, Mouse, Rat
<b>Reactive Species</b>	Human, Mouse
<b>Human Gene ID</b>	79902
<b>Mouse Gene ID</b>	18541
<b>Product Grade</b>	<a href="https://prod-vector-labs-pimcore-assets.s3.us-east-1.amazonaws.com/assets/products/image/elite_plus_medium.png">https://prod-vector-labs-pimcore-assets.s3.us-east-1.amazonaws.com/assets/products/image/elite_plus_medium.png</a>
<b>ELISA Detection Limit</b>	Antibody detection limit dilution 1:32000.
<b>Western Blot</b>	Approx. 75kDa band observed in lysates of cell line HeLa and approx. 70kDa in NIH3T3 cell lysates and in nuclear lysates of cell lines HeLa and HEK293 (calculated MW of 75.0kDa according to NP_079120.1). Recommended concentration: 0.3-1ug/ml. Primary incubation 1 hour at room temperature. <p><strong>Positive Control:</strong> A batch specific positive control lysate is available for this product. Please contact <a href="mailto:Sales@everestbiotech.com">Sales@everestbiotech.com</a> for availability.</p>
<b>Application Type</b>	Pep-ELISA, WB, IF, FC

## SELECTED REFERENCES

[{"pmid": 19841162, "intro": "**This antibody has been successfully used in WB and IP on Human:**", "title": "FROUNT is a common regulator of CCR2 and CCR5 signaling to control directional migration.", "author": "Toda E, Terashima Y, Sato T, Hirose K, Kanegasaki S, Matsushima K.", "journal": "J Immunol. 2009 Nov 15;183(10):6387-94."}, {"pmid": 2, "intro":

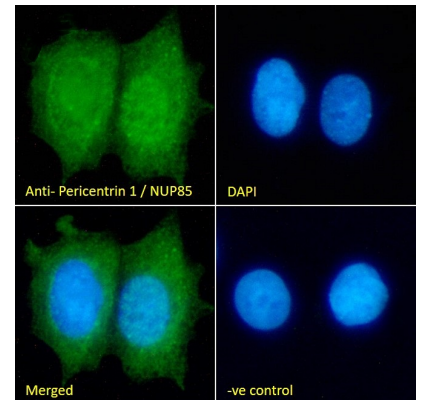
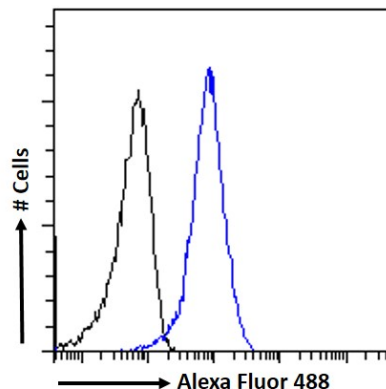
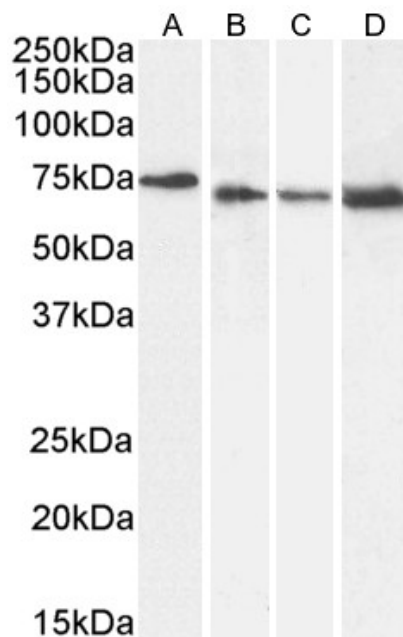


**"This antibody has been successfully used in IHC on Rat:"**, "title": "Disulfiram Ophthalmic Solution Inhibited Macrophage Infiltration by Suppressing Macrophage Pseudopodia Formation in a Rat Corneal Alkali Burn Model", "author": "Toyo Ikebukuro et al.", "journal": "Int. J. Mol. Sci. 2023, 24(1), 735; <https://doi.org/10.3390/ijms24010735>", {"pmid": 39384840, "intro":  
**"This antibody has been successfully used in ICC on Mouse:"**, "title": "Antifibrotic effect of disulfiram on bleomycin-induced lung fibrosis in mice and its impact on macrophage infiltration", "author": "Yugo Okabe, Etsuko Toda, Hirokazu Urushiyama, Yuya Terashima, Shinobu Kunugi, Yusuke Kajimoto, Mika Terasaki, Kouji Matsushima, Akira Saito, Yasuhiro Yamauchi, Takahide Nagase, Akira Shimizu, Yasuhiro Terasaki", "journal": "Sci Rep. 2024 Oct 10;14(1):23653."}]

## DOCUMENTS

- [Data Sheet](#)

## GALLERY IMAGES





[www.everestbiotech.com](http://www.everestbiotech.com)

Email: [customerservice@vectorlabs.com](mailto:customerservice@vectorlabs.com)

Telephone: [\(650\) 697-3600](tel:(650)697-3600)

