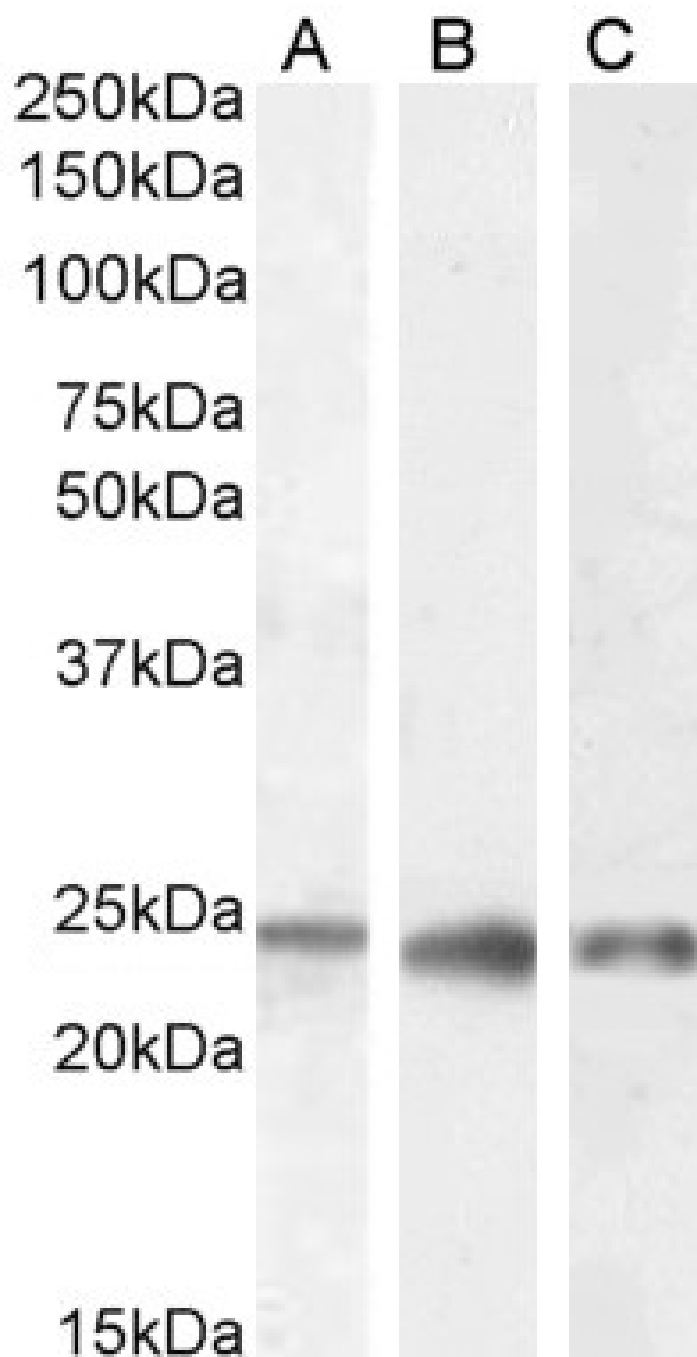


GOAT ANTI-PGRMC1 / MPR ANTIBODY

SKU: EB07207



SPECIFICATIONS

Formulation	Supplied at 0.5 mg/ml in Tris saline, 0.02% sodium azide, pH7.3 with 0.5% bovine serum albumin.
Unit Size	100 µg
Storage	
Instructions	Aliquot and store at -20°C. Minimize freezing and thawing.
Synonym /	
Alias	progesterone binding protein HPR6.6 HGNC:16090 progesterone receptor membrane component 1 MPR PGRMC1
Names	
Usage	Immunofluorescence: This antibody has been successfully used in IF on Human: Izzo, N. J et al.
Summary	(2014) PMID: 25390692.
Accession	
ID	NP_006658.1
Blocking	
Peptide	EBP07207
Immunogen	Peptide with sequence C-EPKDESARKND, from the C Terminus of the protein sequence according to NP_006658.1.
Peptide	
Sequence	C-EPKDESARKND
Purification	Purified from goat serum by ammonium sulphate precipitation followed by antigen affinity chromatography using
Method	the immunizing peptide.
Shipping	
Instructions	Refrigerated
Predicted	
Species	Human, Mouse, Rat
Reactive	
Species	Human, Mouse
Human	
Gene ID	10857
Mouse	
Gene ID	53328
Product	
Grade	https://prod-vector-labs-pimcore-assets.s3.us-east-1.amazonaws.com/assets/products/image/elite_plus_medium.png
IHC Results	Paraffin embedded Human Testis. Recommended concentration: 5µg/ml.
ELISA	
Detection	Antibody detection limit dilution 1:4000.
Limit	
Western	Approx 24kDa band observed in Human Kidney, Liver and Testis lysates, and approx 25kDa in Mouse Testis lysates
Blot	(calculated MW of 21.7kDa according to Human NP_006658.1 and Mouse NP_058063.2). These molecular weights are routinely observed by other sources. Recommended concentration: 0.1-0.3µg/ml. Primary incubation 1 hour at room temperature.
Application	
Type	Pep-ELISA, WB, IHC, IF

SELECTED REFERENCES

[{"pmid": 25390692, "intro": "**This antibody has been successfully used in IF on Human:**", "title": "Alzheimer's therapeutics targeting amyloid beta 1-42 oligomers II: Sigma-2/PGRMC1 receptors mediate Abeta 42 oligomer binding and synaptotoxicity.", "author": "Izzo, N. J., Xu, J.,"}]

et al.", "journal": "PLoS One. 2014 Nov 12;9(11):e111899."}]

DOCUMENTS

- [Data Sheet](#)

GALLERY IMAGES

