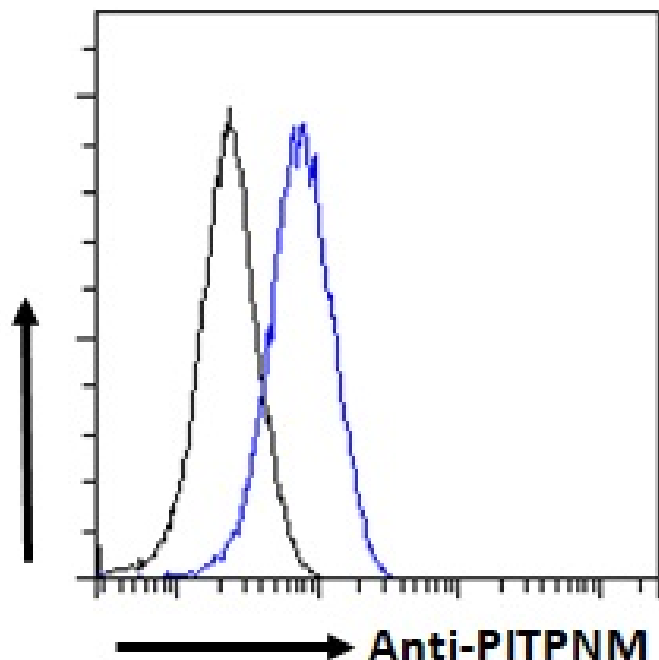


## GOAT ANTI-PITPNM / PITPNM1 ANTIBODY

SKU: EB06327



## SPECIFICATIONS

**Formulation** Supplied at 0.5 mg/ml in Tris saline, 0.02% sodium azide, pH7.3 with 0.5% bovine serum albumin.

**Unit Size** 100 µg

**Storage Instructions** Aliquot and store at -20°C. Minimize freezing and thawing.

**Synonym / Alias Names** retinal degeneration B alpha 1|phosphatidylinositol transfer protein, membrane-associated|Rd9|RDGBA1|RDGBA|RDGB|FLJ44997|PITPNM1|PYK2 N-terminal domain-interacting receptor 2|Drosophila retinal degeneration B|phosphatidylinositol transfer protein, membrane-associated|DRES9|NIR2|PITPNM

**Usage Summary** **Immunofluorescence:** Strong expression of the protein seen in the cytoplasm and endoplasmic reticulum of A549 cells. Recommended concentration: 10µg/ml. **Flow Cytometry:** Flow cytometric analysis of HepG2 cells. Recommended concentration: 10ug/ml.

**Accession ID** NP\_004901.2; NP\_001124320.1

**Blocking Peptide** EBP06327

<b>Immunogen</b>	Peptide with sequence C-KARSISLKLDSEE, from the C Terminus of the protein sequence according to NP_004901.2; NP_001124320.1.
<b>Product Comments</b>	This antibody is expected to recognise both reported isoforms.
<b>Peptide Sequence</b>	C-KARSISLKLDSEE
<b>Purification Method</b>	Purified from goat serum by ammonium sulphate precipitation followed by antigen affinity chromatography using the immunizing peptide.
<b>Shipping Instructions</b>	Refrigerated
<b>Predicted Species</b>	Human, Mouse, Dog, Cow
<b>Reactive Species</b>	Human
<b>Human Gene ID</b>	9600
<b>Mouse Gene ID</b>	18739
<b>Product Grade</b>	<a href="https://prod-vector-labs-pimcore-assets.s3.us-east-1.amazonaws.com/assets/products/image/elite_medium.png">https://prod-vector-labs-pimcore-assets.s3.us-east-1.amazonaws.com/assets/products/image/elite_medium.png</a>
<b>ELISA Detection Limit</b>	Antibody detection limit dilution 1:8000.
<b>Application Type</b>	Pep-ELISA, IF, FC

## DOCUMENTS

- [Data Sheet](#)

## GALLERY IMAGES

