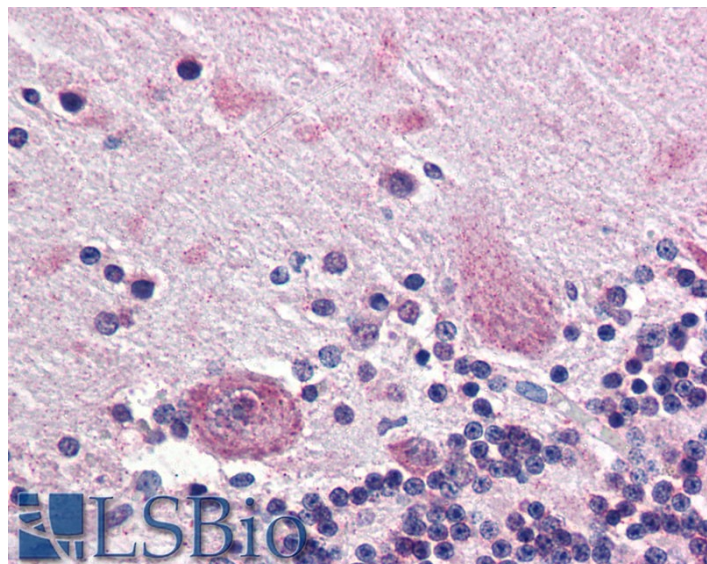


# GOAT ANTI-PPP2R3A ANTIBODY

**SKU:** EB08233



## SPECIFICATIONS

**Formulation** Supplied at 0.5 mg/ml in Tris saline, 0.02% sodium azide, pH7.3 with 0.5% bovine serum albumin.

**Unit Size** 100 µg

**Storage Instructions** Aliquot and store at -20°C. Minimize freezing and thawing.

**Synonym / Alias Names** PPP2R3A|protein phosphatase 2 (formerly 2A), regulatory subunit B\1\1, alpha|PPP2R3|PR130|PR72|PP2A, subunit B, B\1\1-PR72|PR130|PP2A, subunit B, B72/B130 isoforms|PP2A, subunit B, R3 isoform|Serine/threonine protein phosphatase 2A, 72/130 kDa regul

**Accession ID** NP\_002709.2; NP\_871626.1

**Blocking Peptide** EBP08233

**Immunogen** Peptide with sequence C-QKDVENGDGPEPSD, from the internal region of the protein sequence according to NP\_002709.2; NP\_871626.1.

**Product Comments** This antibody is expected to recognise both reported isoforms (NP\_002709.2; NP\_871626.1).

**Peptide Sequence** C-QKDVENGDGPEPSD

**Purification Method** Purified from goat serum by ammonium sulphate precipitation followed by antigen affinity chromatography using the immunizing peptide.

<b>Shipping Instructions</b>	Refrigerated
<b>Predicted Species</b>	Human
<b>Reactive Species</b>	Human
<b>Human Gene ID</b>	5523
<b>Product Grade</b>	<a href="https://prod-vector-labs-pimcore-assets.s3.us-east-1.amazonaws.com/assets/products/image/elite_medium.png">https://prod-vector-labs-pimcore-assets.s3.us-east-1.amazonaws.com/assets/products/image/elite_medium.png</a>
<b>IHC Results</b>	Paraffin embedded Human Brain (Cerebellum). Recommended concentration: 5µg/ml.
<b>ELISA</b>	
<b>Detection Limit</b>	Antibody detection limit dilution 1:16000.
<b>Western Blot</b>	Preliminary experiments gave an approx 80kDa band in Human Skeletal Muscle lysates after 1µg/ml antibody staining. Please note that currently we cannot find an explanation in the literature for the band we observe given the calculated size of 130kDa according to NP_002709.2 and of 61.1kDa according to NP_871626.1. The 80kDa band was successfully blocked by incubation with the immunizing peptide.
<b>Application Type</b>	Pep-ELISA, IHC

## DOCUMENTS

- [Data Sheet](#)

## GALLERY IMAGES

