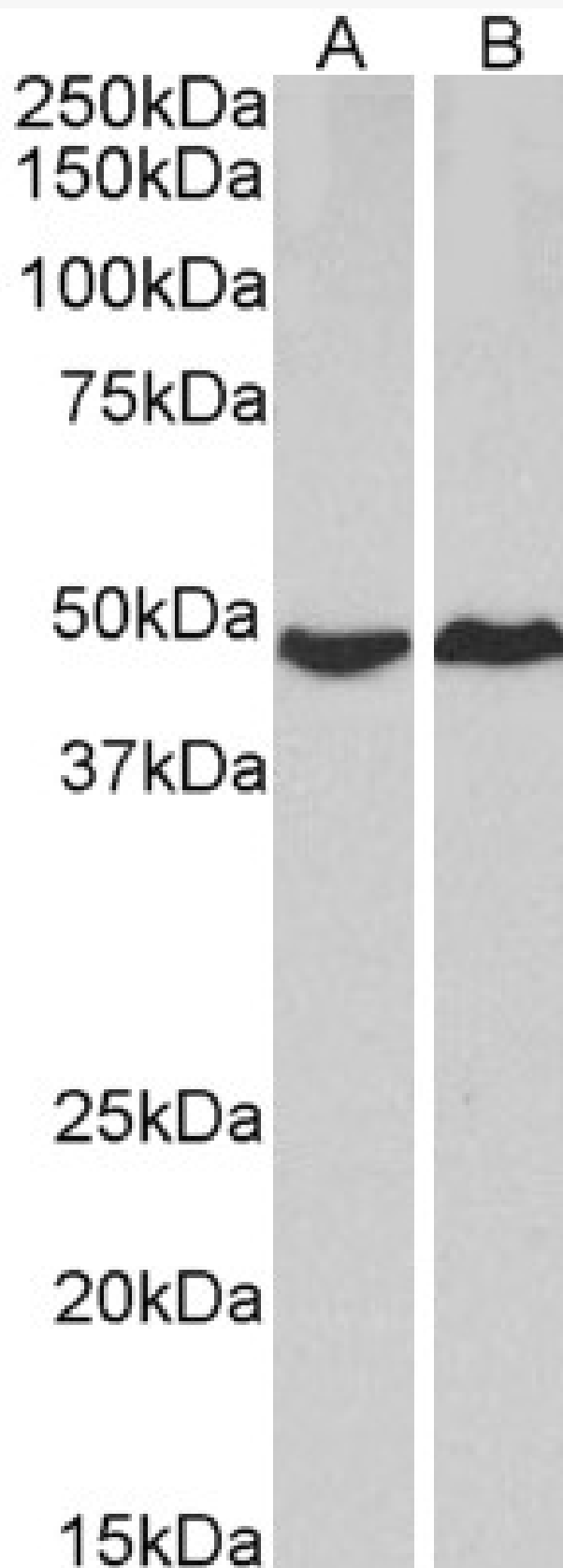


# GOAT ANTI-PRKACA ANTIBODY

**SKU:** EB12864



## SPECIFICATIONS

<b>Formulation</b>	Supplied at 0.5 mg/ml in Tris saline, 0.02% sodium azide, pH7.3 with 0.5% bovine serum albumin.
<b>Unit Size</b>	100 µg
<b>Storage Instructions</b>	Aliquot and store at -20°C. Minimize freezing and thawing.
<b>Synonym / Alias Names</b>	protein kinase A catalytic subunit cAMP-dependent protein kinase catalytic subunit alpha PKA C-alpha PPNAD4 PKACA protein kinase, cAMP-dependent, catalytic, alpha PRKACA
<b>Accession ID</b>	NP_002721.1; NP_997401.1; NP_001291278.1
<b>Blocking Peptide</b>	EBP12864
<b>Immunogen</b>	Peptide with sequence C-ESPAQNTAHLQ, from the internal region (near N Terminus) of the protein sequence according to NP_002721.1; NP_997401.1; NP_001291278.1.
<b>Product Comments</b>	This antibody is expected to recognize all three reported isoforms (NP_002721.1; NP_997401.1; NP_001291278.1). Based on the choice of the immunizing peptide there is no expected cross-reactivity with the other subunits.
<b>Peptide Sequence</b>	C-ESPAQNTAHLQ
<b>Purification Method</b>	Purified from goat serum by ammonium sulphate precipitation followed by antigen affinity chromatography using the immunizing peptide.
<b>Shipping Instructions</b>	Refrigerated
<b>Predicted Species</b>	Human
<b>Reactive Species</b>	Human
<b>Human Gene ID</b>	5566
<b>Product Grade</b>	<a href="https://prod-vector-labs-pimcore-assets.s3.us-east-1.amazonaws.com/assets/products/image/elite_medium.png">https://prod-vector-labs-pimcore-assets.s3.us-east-1.amazonaws.com/assets/products/image/elite_medium.png</a>
<b>ELISA Detection Limit</b>	Antibody detection limit dilution 1:8000.
<b>Western Blot</b>	Approx 48kDa band observed in lysates of cell line HeLa and MCF7 (calculated MW of 49.1kDa according to NP_002721.1). Recommended concentration: 1-3µg/ml.
<b>Application Type</b>	Pep-ELISA, WB

## DOCUMENTS

- [Data Sheet](#)

## GALLERY IMAGES

