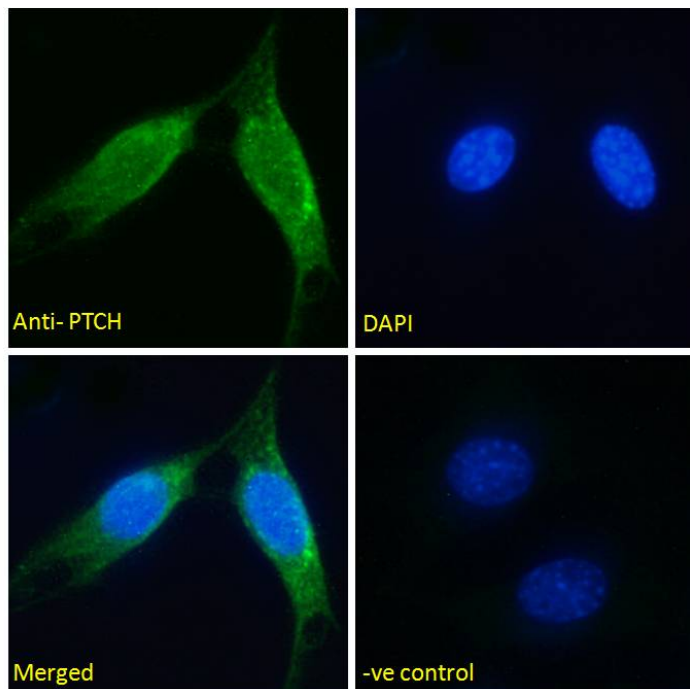


GOAT ANTI-PTCH (INTERNAL) ANTIBODY

SKU: EB07312



SPECIFICATIONS

Formulation Supplied at 0.5 mg/ml in Tris saline, 0.02% sodium azide, pH7.3 with 0.5% bovine serum albumin.

Unit Size 100 µg

Storage Instructions Aliquot and store at -20°C. Minimize freezing and thawing.

Synonym / Alias Names patched (Drosophila) homolog|patched|PTCH protein -10|PTCH protein +4\1|PTCH protein +12b|PTCH1|PTC1|PTC|NBCCS|HPE7|FLJ42602|BCNS|RP11-435O5.3|patched homolog (Drosophila)|PTCH

Usage Summary Immunofluorescence :Expression of the protein seen in the Golgi/membrane of NIH3T3 cells. Recommended concentration: 5µg/ml.

Accession ID NP_000255.2; NP_001077072.1; NP_001077071.1; NP_001077075.1

Blocking Peptide EBP07312

Immunogen Peptide with sequence C-HPESRHHPPSNPRQQ, from the internal region of the protein sequence according to NP_000255.2; NP_001077072.1; NP_001077071.1; NP_001077075.1.

Product Comments	This antibody is expected to recognise all four reported isoforms (NP_000255.2; NP_001077072.1; NP_001077071.1; NP_001077075.1). Reported variants represent identical protein (NP_001077075.1; NP_001077076.1; NP_001077073.1; NP_001077074.1).
Peptide Sequence	C-HPESRHHPPSNPRQQ
Purification Method	Purified from goat serum by ammonium sulphate precipitation followed by antigen affinity chromatography using the immunizing peptide.
Shipping Instructions	Refrigerated
Predicted Species	Human, Dog, Pig, Cow
Reactive Species	Human, Mouse
Human Gene ID	5727
Product Grade	https://prod-vector-labs-pimcore-assets.s3.us-east-1.amazonaws.com/assets/products/image/elite_medium.png
ELISA Detection Limit	Antibody detection limit dilution 1:32000.
Western Blot	Approx 150kDa band observed in Human Brain lysates (calculated MW of 153.9kDa according to NP_001077071.1). Recommended concentration: 1-3µg/ml. Primary incubation 1 hour at room temperature.
Application Type	Pep-ELISA, IF, WB

DOCUMENTS

- [Data Sheet](#)

GALLERY IMAGES

