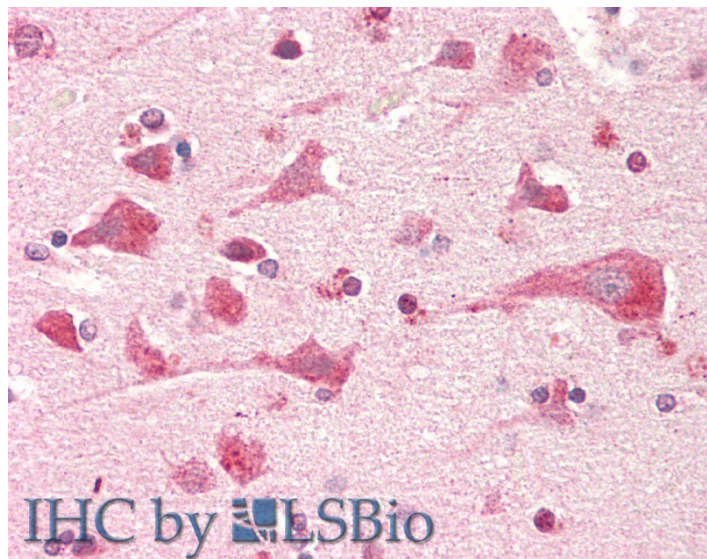


GOAT ANTI-PTGES2 (AA292-306) ANTIBODY

SKU: EB12928



SPECIFICATIONS

Formulation Supplied at 0.5 mg/ml in Tris saline, 0.02% sodium azide, pH7.3 with 0.5% bovine serum albumin.

Unit Size 100 µg

Storage Instructions Aliquot and store at -20°C. Minimize freezing and thawing.

Synonym / Alias microsomal prostaglandin E synthase-2|membrane-associated prostaglandin E synthase 2|gamma-interferon-activated transcriptional element-binding factor 1|GATE-binding factor

Names 1|mPGES-2|PGES2|GBF1|GBF-1|C9orf15|prostaglandin E synthase 2|PTGES2

Accession ID NP_079348.1; NP_945176.1

Blocking Peptide EBP12928

Immunogen Peptide with sequence C-RLKSRHRLQDNVRED, from the internal region of the protein sequence according to NP_079348.1; NP_945176.1.

Product Comments This antibody is expected to recognize both reported isoforms (NP_079348.1; NP_945176.1). Reported variants represent identical protein: NP_001243264.1, NP_945176.1.

Peptide Sequence C-RLKSRHRLQDNVRED

Purification Method Purified from goat serum by ammonium sulphate precipitation followed by antigen affinity chromatography using the immunizing peptide.

Shipping Instructions	Refrigerated
Predicted Species	Human
Reactive Species	Human
Human Gene ID	80142
Product Grade	https://prod-vector-labs-pimcore-assets.s3.us-east-1.amazonaws.com/assets/products/image/elite_medium.png
IHC Results	Paraffin embedded Human Brain (Cortex) and Heart. Recommended concentration: 5µg/ml.
ELISA	
Detection Limit	Antibody detection limit dilution 1:128000.
Western Blot	Approx 30kDa band observed in lysates of cell line HeLa (calculated MW of 41.9kDa according to NP_079348.1). This molecular weight is routinely observed by other sources. Recommended concentration: 1-3µg/ml.
Application Type	Pep-ELISA, WB, IHC

DOCUMENTS

- [Data Sheet](#)

GALLERY IMAGES

