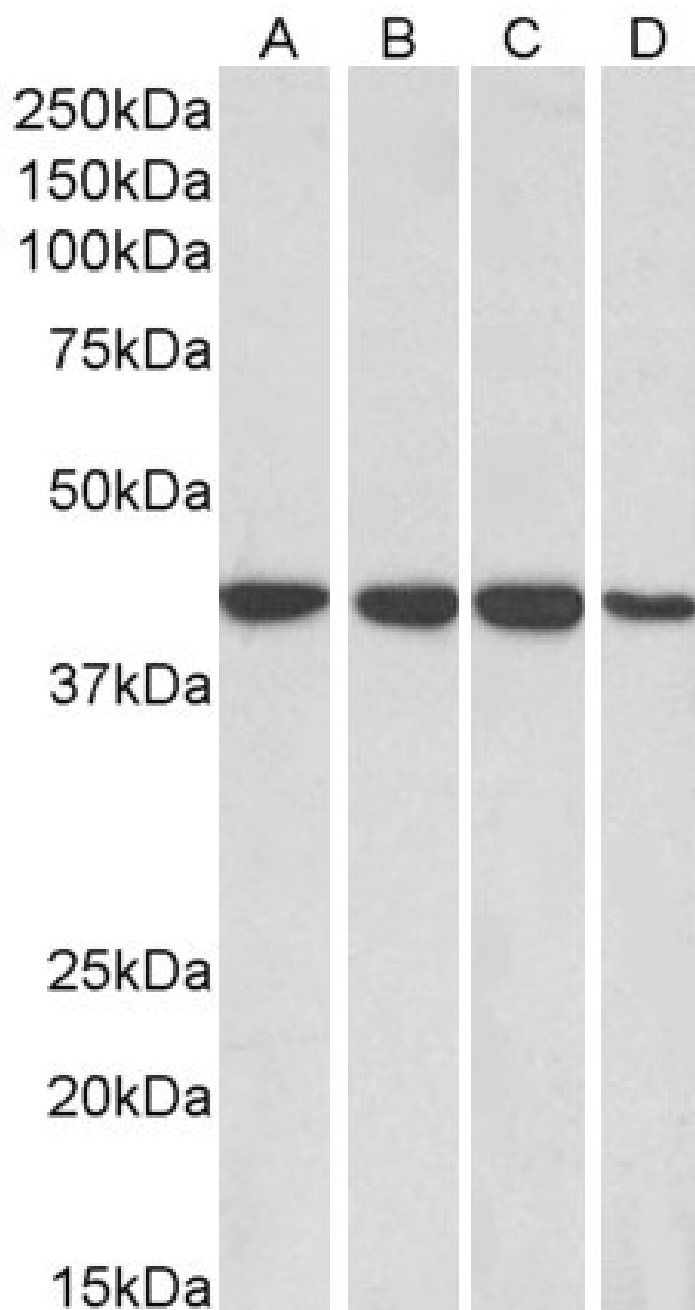


GOAT ANTI-RAE1 ANTIBODY

SKU: EB06838



SPECIFICATIONS

Formulation	Supplied at 0.5 mg/ml in Tris saline, 0.02% sodium azide, pH7.3 with 0.5% bovine serum albumin.
Unit Size	100 µg
Storage	Aliquot and store at -20°C. Minimize freezing and thawing.
Instructions	OTTHUMP00000166110 MGC126077 MGC126076 MGC117333 RP4-800J21.2 migration-inducing gene
Synonym / Alias	14 mRNA-binding protein, 41-kD mRNA-associated protein MRNP 41 mRNA export protein homolog of yeast Rae1 (Bharathi) mRNA-associated protein of 41 kDa (Kraemer) RAE1 (RNA export 1, S.pombe)
Names	homolog dj800J21.1 dj481F12.3 Mnnp41 MRNP41 MIG14 FLJ30608 HGNC:9828 RAE1 RNA export 1 homolog (S. pombe) RAE1
Accession ID	NP_003601.1; NP_001015885.1
Blocking Peptide	EBP06838
Immunogen	Peptide with sequence C-NAAEELKPRNKK, from the C Terminus of the protein sequence according to NP_003601.1; NP_001015885.1.
Product Comments	NP_003601and NP_001015885 represent identical proteins.
Peptide Sequence	C-NAAEELKPRNKK
Purification Method	Purified from goat serum by ammonium sulphate precipitation followed by antigen affinity chromatography using the immunizing peptide.
Shipping Instructions	Refrigerated
Predicted Species	Human, Mouse, Rat, Pig, Dog, Cow
Reactive Species	Human
Human Gene ID	8480
Product Grade	https://prod-vector-labs-pimcore-assets.s3.us-east-1.amazonaws.com/assets/products/image/elite_medium.png
IHC Results	In paraffin embedded Human Brain Cortex shows staining of neuronal cell bodies. Recommended concentration: 3-6µg/ml. Paraffin embedded Human Heart. Recommended concentration: 3.75µg/ml.
ELISA	
Detection Limit	Antibody detection limit dilution 1:64000.
Western Blot	Approx 40kDa band observed in lysates cell lines HepG2, HeLa, Jurkat and MCF7 (calculated MW of 41.0kDa according to NP_003601.1). Recommended concentration: 0.1-0.3µg/ml.
Application Type	Pep-ELISA, WB, IHC

DOCUMENTS

- [Data Sheet](#)

GALLERY IMAGES

