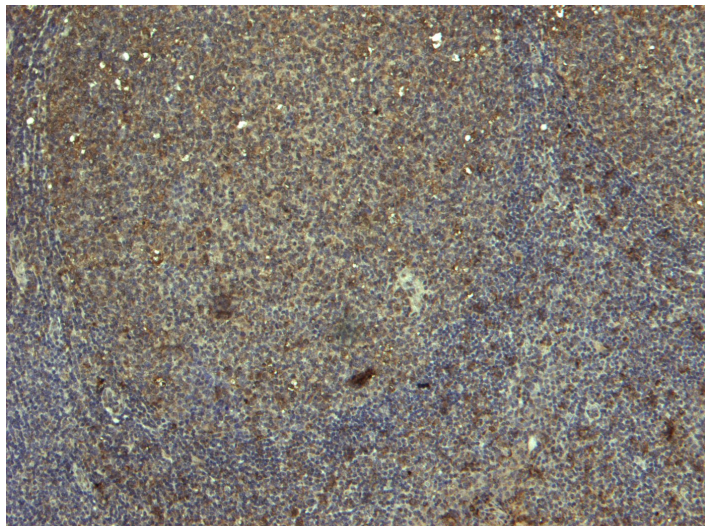


GOAT ANTI-RAN ANTIBODY

SKU: EB06419



SPECIFICATIONS

Formulation Supplied at 0.5 mg/ml in Tris saline, 0.02% sodium azide, pH7.3 with 0.5% bovine serum albumin.

Unit Size 100 µg

Storage Instructions Aliquot and store at -20°C. Minimize freezing and thawing.

Synonym / Alias Names ras-related nuclear protein|member RAS oncogene family|guanosine triphosphatase Ran|RanGTPase|OK/SW-cl.81|Gsp1|RAN, member RAS oncogene family|ARA24|TC4|RAN

Accession ID NP_006316.1

Blocking Peptide EBP06419

Immunogen Peptide with sequence AAQGEPQVQFKLV-C, from the N Terminus of the protein sequence according to NP_006316.1.

Peptide Sequence AAQGEPQVQFKLV-C

Purification Method Purified from goat serum by ammonium sulphate precipitation followed by antigen affinity chromatography using the immunizing peptide.

Shipping Instructions Refrigerated

Predicted Species	Human, Mouse, Rat, Dog, Cow
Reactive Species	Human, Mouse
Human Gene ID	5901
Mouse Gene ID	19384
Rat Gene ID	84509
Product Grade	https://prod-vector-labs-pimcore-assets.s3.us-east-1.amazonaws.com/assets/products/image/elite_medium.png
IHC Results	Paraffin embedded Human Tonsil. Recommended concentration: 3µg/ml.
ELISA	
Detection Limit	Antibody detection limit dilution 1:32000.
Western Blot	Approx 25kDa band observed in lysates of cell lines A431, HeLa, HepG2 and NIH3T3 (calculated MW of 24.4kDa according to NP_006316.1). Recommended for use at 0.3-1µg/ml. Primary incubation was 1 hour.
Application Type	Pep-ELISA, WB, IHC

DOCUMENTS

- [Data Sheet](#)

GALLERY IMAGES

