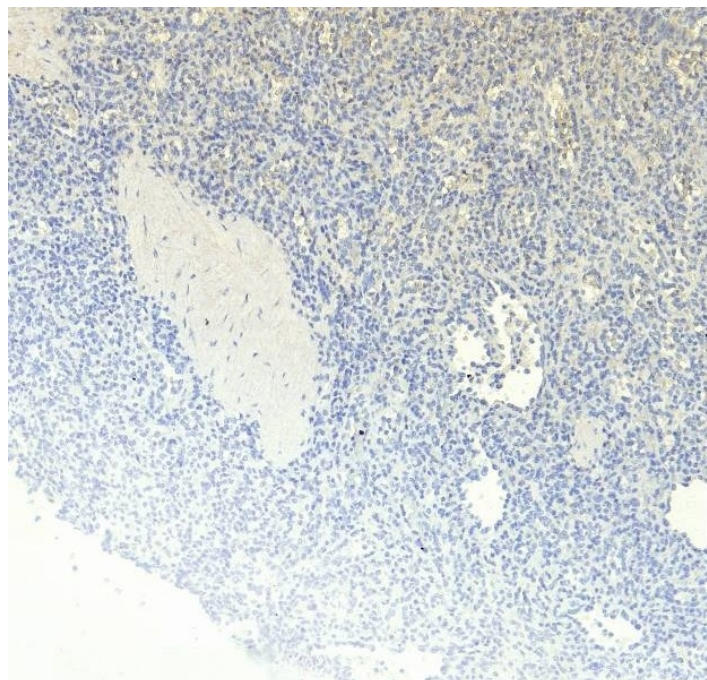


GOAT ANTI-RANTES ANTIBODY

SKU: EB11961



SPECIFICATIONS

Formulation Supplied at 0.5 mg/ml in Tris saline, 0.02% sodium azide, pH7.3 with 0.5% bovine serum albumin.

Unit Size 100 µg

Storage Instructions Aliquot and store at -20°C. Minimize freezing and thawing.

Synonym / Alias Names t cell-specific protein P228|small-inducible cytokine A5|small inducible cytokine subfamily A (Cys-Cys), member 5|small inducible cytokine A5 (RANTES)|regulated upon activation, normally T-expressed, and presumably secreted|eosinophil chemotactic cytokine|eoCP|beta-chemokine RANTES|T-cell-specific protein RANTES|T-cell specific protein p288|SIS-delta|C-C motif chemokine 5|TCP228|SISd|SCYA5|RANTES|D17S136E|chemokine (C-C motif) ligand 5|CCL5

Accession ID NP_002976.2

Blocking Peptide EBP11961

Immunogen Peptide with sequence C-RPLPRAHIKE, from the internal region of the protein sequence according to NP_002976.2.

Peptide Sequence	C-RPLPRAHIKE
Purification Method	Purified from goat serum by ammonium sulphate precipitation followed by antigen affinity chromatography using the immunizing peptide.
Shipping Instructions	Refrigerated
Predicted Species	Human
Reactive Species	Human
Human Gene ID	6352
Product Grade	https://prod-vector-labs-pimcore-assets.s3.us-east-1.amazonaws.com/assets/products/image/elite_medium.png
IHC Results	Paraffin embedded Human Spleen. Recommended concentration: 5-6µg/ml.
ELISA	
Detection Limit	Antibody detection limit dilution 1:128000.
Application Type	Pep-ELISA, IHC

GALLERY IMAGES

