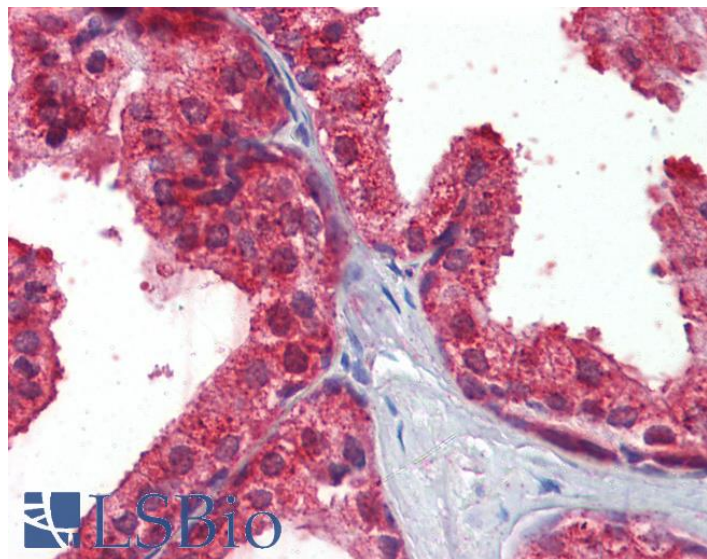


GOAT ANTI-RESTIN / CLIP1 ANTIBODY

SKU: EB09512



SPECIFICATIONS

Formulation	Supplied at 0.5 mg/ml in Tris saline, 0.02% sodium azide, pH7.3 with 0.5% bovine serum albumin.
Unit Size	100 µg
Storage Instructions	Aliquot and store at -20°C. Minimize freezing and thawing.
Synonym / Alias Names	restin (Reed-Steinberg cell-expressed intermediate filament-associated protein) restin cytoplasmic linker 1 Reed-Steinberg cell-expressed intermediate filament-associated protein RSN MGC131604 CYLN1 CLIP170 CLIP-170 CLIP CAP-GLY domain containing linker protein 1 CLIP1
Usage Summary	Immunofluorescence: Strong expression of the protein seen in A431 and A549 cells. Recommended concentration: 10µg/ml. Flow Cytometry: Flow cytometric analysis of A549 cells. Recommended concentration: 10ug/ml.
Accession ID	NP_002947.1; NP_937883.1; NP_001234926.1; NP_001376220.1
Blocking Peptide	EBP09512
Immunogen	Peptide with sequence C-PHSTHHGSRGEERP, from the C Terminus of the protein sequence according to NP_002947.1; NP_937883.1; NP_001234926.1; NP_001376220.1.
Product Comments	This antibody is expected to recognize both reported isoforms (NP_002947.1; NP_937883.1).
Peptide Sequence	C-PHSTHHGSRGEERP

Purification Method	Purified from goat serum by ammonium sulphate precipitation followed by antigen affinity chromatography using the immunizing peptide.
Shipping Instructions	Refrigerated
Predicted Species	Human
Reactive Species	Human
Human Gene ID	6249
Mouse Gene ID	56430
Rat Gene ID	65201
Product Grade	https://prod-vector-labs-pimcore-assets.s3.us-east-1.amazonaws.com/assets/products/image/elite_plus_medium.png
IHC Results	Paraffin embedded Human Thyroid and Prostate. Recommended concentration: 2.5µg/ml.
ELISA	
Detection Limit	Antibody detection limit dilution 1:8000.
Western Blot	Approx. 150kDa band observed in lysates of cell lines HEK293, A549, HepG2 and HeLa (calculated MW of 161kDa according to NP_002947.1). Recommended concentration: 0.1-1µg/ml. Primary incubation 1 hour at room temperature.
Application Type	Pep-ELISA, WB, IHC, IF, FC

DOCUMENTS

- [Data Sheet](#)

GALLERY IMAGES

