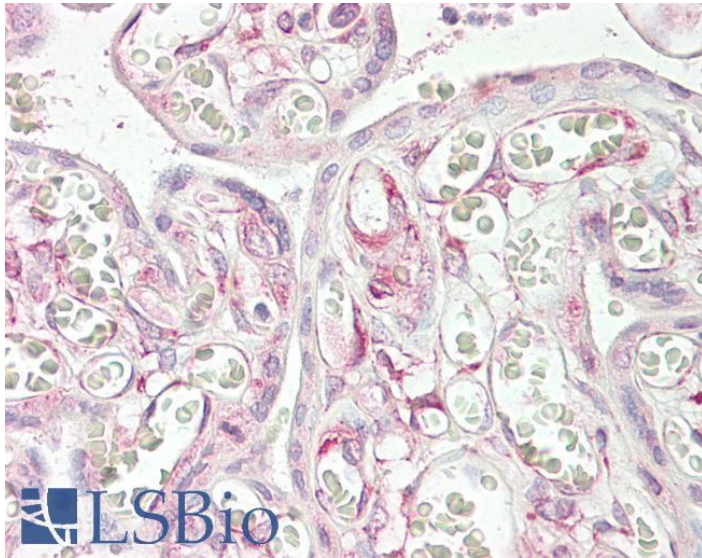




GOAT ANTI-RIG1 / RARRES3 (AA 124 TO 136) ANTIBODY

SKU: EB08339



SPECIFICATIONS

Formulation Supplied at 0.5 mg/ml in Tris saline, 0.02% sodium azide, pH7.3 with 0.5% bovine serum albumin.

Unit Size 100 µg

Storage Instructions Aliquot and store at -20°C. Minimize freezing and thawing.

Synonym /

Alias Names TIG3|RIG1|MGC8906|HRASLS4|retinoic acid receptor responder (tazarotene induced) 3|RARRES3

Accession

ID NP_004576.2

Blocking

Peptide EBP08339

Immunogen Peptide with sequence KSRCKQVEKAKVE, from the internal region of the protein sequence according to NP_004576.2.

Peptide

Sequence KSRCKQVEKAKVE

Purification

Method Purified from goat serum by ammonium sulphate precipitation followed by antigen affinity chromatography

using the immunizing peptide.

Shipping

Instructions Refrigerated



Predicted Species	Human
Reactive Species	Human
Human Gene ID	5920
Product Grade	https://prod-vector-labs-pimcore-assets.s3.us-east-1.amazonaws.com/assets/products/image/elite_medium.png
IHC Results	Paraffin embedded Human Placenta. Recommended concentration: 3.75µg/ml.
ELISA Detection Limit	Antibody detection limit dilution 1:128000.
Western Blot	Preliminary experiments gave bands at approx 22kDa and 55kDa in Human Thymus lysates after 1µg/ml antibody staining. The 55kDa band was observed in all tissues tested. Please note that currently we cannot find an explanation in the literature for the bands we observe given the calculated size of 18.8kDa according to NP_004576.2. Both detected bands were successfully blocked by incubation with the immunizing peptide (and BLAST results with the immunizing peptide sequence did not identify any other proteins to explain the additional bands).
Application Type	Pep-ELISA, IHC

DOCUMENTS

- [Data Sheet](#)

GALLERY IMAGES

