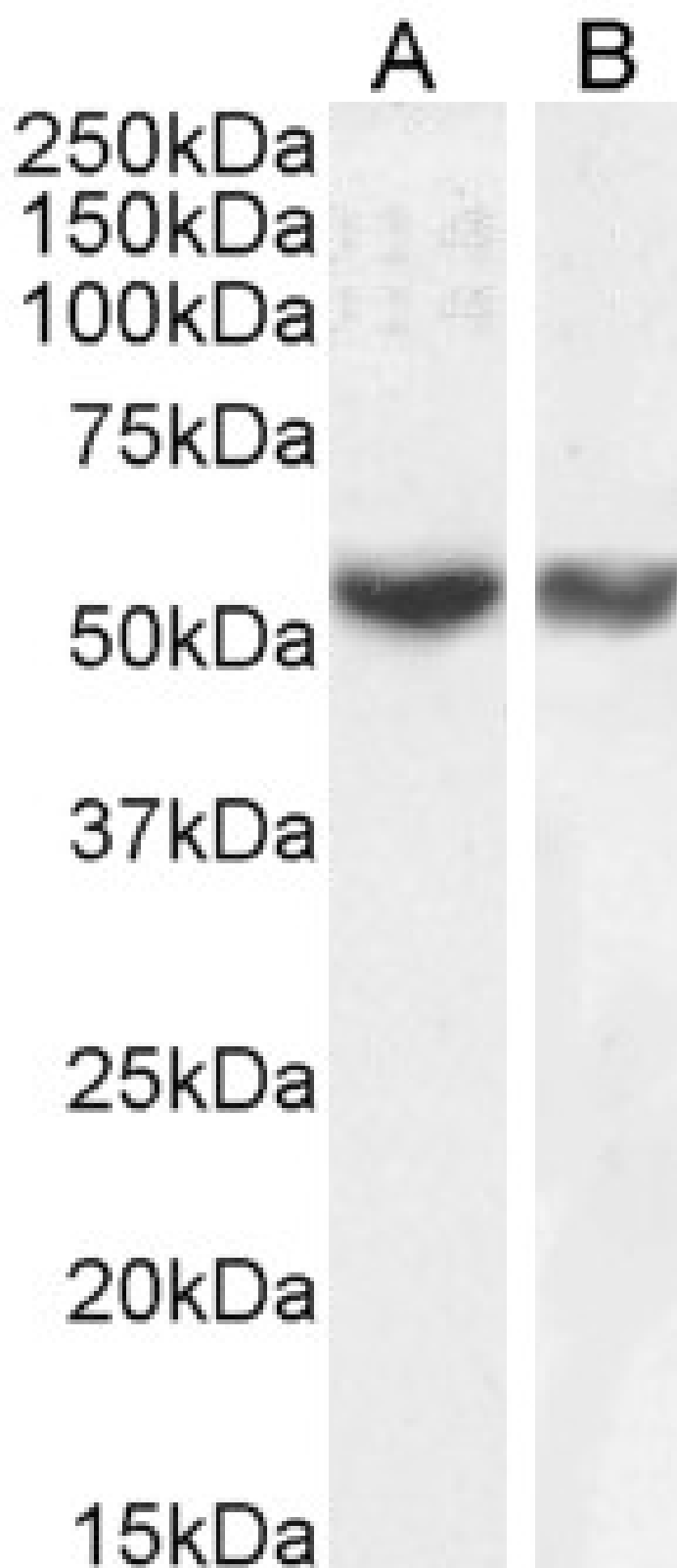


GOAT ANTI-RNF8 ANTIBODY

SKU: EB05843



SPECIFICATIONS

Formulation	Supplied at 0.5 mg/ml in Tris saline, 0.02% sodium azide, pH7.3 with 0.5% bovine serum albumin.
Unit Size	100 µg
Storage Instructions	Aliquot and store at -20°C. Minimize freezing and thawing.
Synonym / Alias Names	UBC13/UEV-interacting ring finger protein OTTHUMP00000039684 C3HC4-type zinc finger protein FLJ12013 KIAA0646 ring finger protein (C3HC4 type) 8 ring finger protein 8 RNF8
Usage Summary	Flow Cytometry: Flow cytometric analysis of HeLa cells. Recommended concentration: 10ug/ml.
Accession ID	NP_003949.1; NP_898901.1
Blocking Peptide	EBP05843
Immunogen	Peptide with sequence GEPGFFVTGDRAG-C, from the N Terminus of the protein sequence according to NP_003949.1; NP_898901.1.
Product Comments	This antibody is expected to recognize both reported isoforms (NP_003949.1 and NP_898901.1).
Peptide Sequence	GEPGFFVTGDRAG-C
Purification Method	Purified from goat serum by ammonium sulphate precipitation followed by antigen affinity chromatography using the immunizing peptide.
Shipping Instructions	Refrigerated
Predicted Species	Human
Reactive Species	Human
Human Gene ID	9025
Product Grade	https://prod-vector-labs-pimcore-assets.s3.us-east-1.amazonaws.com/assets/products/image/elite_medium.png
ELISA Detection Limit	Antibody detection limit dilution 1:128000.
Western Blot	Approx 55kDa band observed in Human Testis and Lung lysates and approx. 50kDa in nuclear lysates of cell lines HepG2 and Jurkat (predicted MW of 56kDa according to NP_003949.1 and 50.8kDa according to NP_898901.1). Recommended concentration 0.5-2µg/ml. Primary incubation 1 hour at room temperature.
Application Type	Pep-ELISA, WB, FC

DOCUMENTS

- [Data Sheet](#)

GALLERY IMAGES

