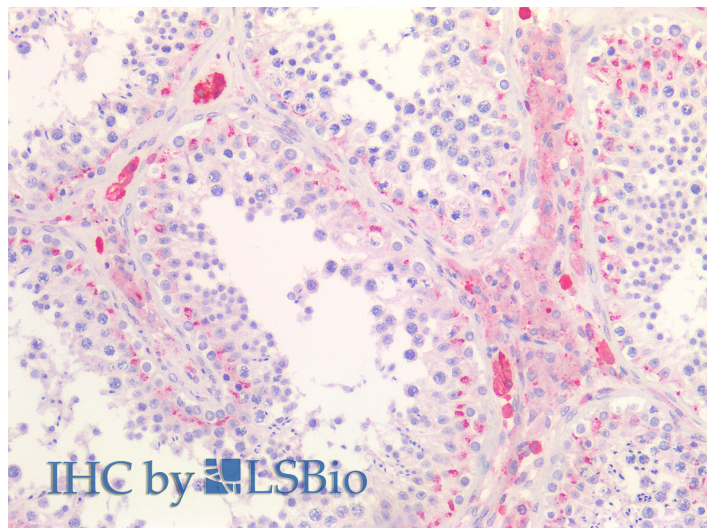


GOAT ANTI-SCARB1 / SR-BI ANTIBODY

SKU: EB12300



SPECIFICATIONS

Formulation Supplied at 0.5 mg/ml in Tris saline, 0.02% sodium azide, pH7.3 with 0.5% bovine serum albumin.

Unit Size 100 µg

Storage Instructions Aliquot and store at -20°C. Minimize freezing and thawing.

Synonym / Alias Names scavenger receptor class B type III|scavenger receptor class B member 1|CD36 antigen (collagen type I receptor, thrombospondin receptor)-like 1|CD36 and LIMPII analogous 1|SRB1|SR-BI|HDLQTL6|CLA1|CLA-1|CD36L1|scavenger receptor class B, member 1|SCARB1

Accession ID NP_005496.4

Blocking Peptide EBP12300

Immunogen Peptide with sequence C-TSAPKGSVLQEAK, from the C Terminus of the protein sequence according to NP_005496.4.

Product Comments This antibody is expected to recognize isoform 1 (NP_005496.4) only.

Peptide Sequence C-TSAPKGSVLQEAK

Purification Method Purified from goat serum by ammonium sulphate precipitation followed by antigen affinity chromatography using the immunizing peptide.

Shipping Instructions	Refrigerated
Predicted Species	Human
Reactive Species	Human
Human Gene ID	949
Product Grade	https://prod-vector-labs-pimcore-assets.s3.us-east-1.amazonaws.com/assets/products/image/elite_medium.png
IHC Results	Paraffin embedded Human Testis. Recommended concentration: 5µg/ml.
ELISA	
Detection Limit	Antibody detection limit dilution 1:128000.
Western Blot	Approx 85kDa band observed in Human Adrenal gland lysates (calculated MW of 57.0kDa according to NP_005496.4). We do note that SCARB1 is a glycoprotein which makes a higher size band to be expected, and this is consistent with observations with different antibodies from other sources. Recommended concentration: 0.01-0.03µg/ml.
Application Type	Pep-ELISA, WB, IHC

DOCUMENTS

- [Data Sheet](#)

GALLERY IMAGES

