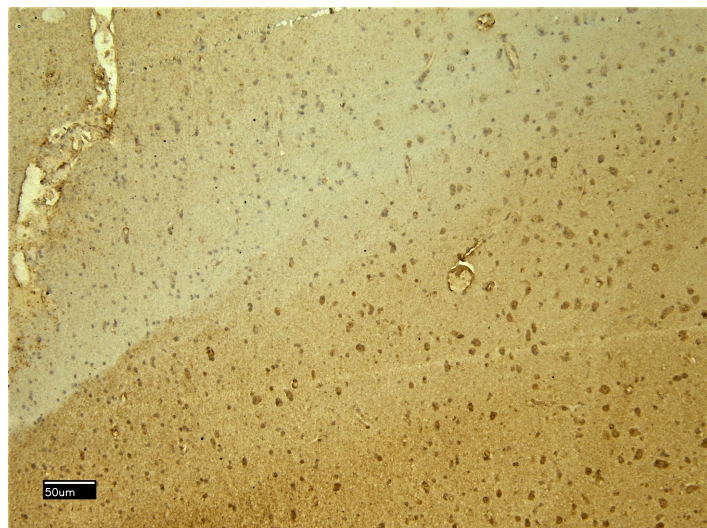


GOAT ANTI-SCN5A ANTIBODY

SKU: EB06912



SPECIFICATIONS

Formulation Supplied at 0.5 mg/ml in Tris saline, 0.02% sodium azide, pH7.3 with 0.5% bovine serum albumin.

Unit Size 100 µg

Storage Instructions Aliquot and store at -20°C. Minimize freezing and thawing.

Synonym / Alias Names voltage-gated sodium channel type V alpha|sodium channel protein type V alpha subunit|cardiac tetrodotoxin-insensitive voltage-dependent sodium channel alpha subunit|VF1|sodium channel, voltage-gated, type V, alpha polypeptide (long (electrocardiographic) QT syndrome 3)|cardiac sodium channel alpha subunit|sodium channel, voltage-gated, type V, alpha (long QT syndrome 3)|Nav1.5|sodium channel, voltage-gated, type V, alpha subunit|SSS1|PFHB1|SSS1|LQT3|IVF|HH1|ICCD|HBBD|HB2|HB1|CMPD2|CMD1E|CDCD2|SCN5A

Accession ID NP_932173.1; NP_000326.2; NP_001092874.1; NP_001092875.1; NP_001153632.1; NP_001153633.1

Blocking Peptide EBP06912

Immunogen Peptide with sequence C-ETDDQSPEKIN, from the internal region of the protein sequence according to NP_932173.1; NP_000326.2; NP_001092874.1; NP_001092875.1; NP_001153632.1; NP_001153633.1.

Product Comments This antibody is expected to recognise all reported isoforms (NP_932173.1; NP_000326.2; NP_001092874.1; NP_001092875.1).

Peptide Sequence C-ETDDQSPEKIN

Purification Method	Purified from goat serum by ammonium sulphate precipitation followed by antigen affinity chromatography using the immunizing peptide.
Shipping Instructions	Refrigerated
Predicted Species	Human, Mouse, Rat, Dog, Cow
Reactive Species	Human
Human Gene ID	6331
Product Grade	https://prod-vector-labs-pimcore-assets.s3.us-east-1.amazonaws.com/assets/products/image/elite_medium.png
IHC Results	Paraffin embedded Human Brain (Cortex). Recommended concentration: 5-8µg/ml.
ELISA Detection Limit	Antibody detection limit dilution 1:2000.
Application Type	Pep-ELISA, IHC

DOCUMENTS

- [Data Sheet](#)

GALLERY IMAGES

