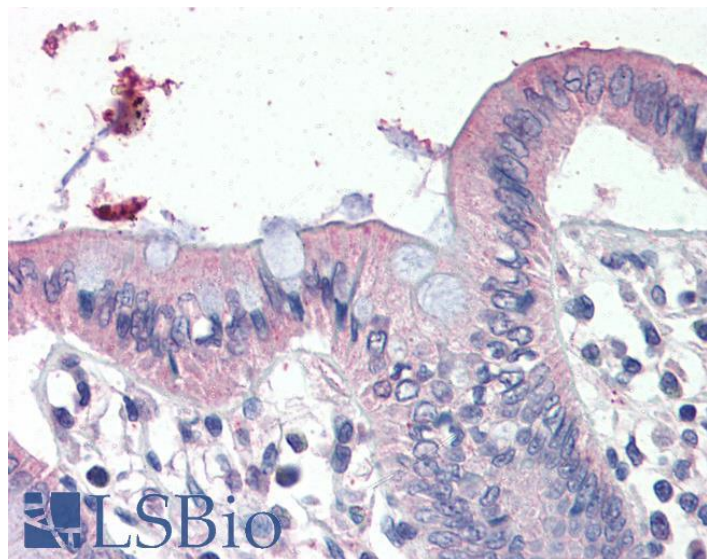


GOAT ANTI-SCNN1G ANTIBODY

SKU: EB08972



SPECIFICATIONS

Formulation Supplied at 0.5 mg/ml in Tris saline, 0.02% sodium azide, pH7.3 with 0.5% bovine serum albumin.

Unit Size 100 µg

Storage Instructions Aliquot and store at -20°C. Minimize freezing and thawing.

Synonym / Alias Names SCNN1G|sodium channel, nonvoltage-gated 1, gamma|ENaCg|ENaCgamma|PHA1|SCNEG|ENaC gamma subunit|amiloride-sensitive epithelial sodium channel gamma subunit

Accession ID NP_001030.2

Blocking Peptide EBP08972

Immunogen Peptide with sequence C-SNQLTDTQMLDE, from the C Terminus of the protein sequence according to NP_001030.2.

Peptide Sequence C-SNQLTDTQMLDE

Purification Method Purified from goat serum by ammonium sulphate precipitation followed by antigen affinity chromatography using the immunizing peptide.

Shipping Instructions Refrigerated

Predicted Species	Human
Reactive Species	Human
Human Gene ID	6340
Product Grade	https://prod-vector-labs-pimcore-assets.s3.us-east-1.amazonaws.com/assets/products/image/elite_medium.png
IHC Results	Paraffin embedded Human Colon. Recommended concentration: 4µg/ml.
ELISA	
Detection Limit	Antibody detection limit dilution 1:16000.
Western Blot	Preliminary experiments gave an approx 140kDa band in Human Breast cancer and Colon lysates after 1µg/ml antibody staining. Please note that currently we cannot find an explanation in the literature for the band we observe given the calculated size of 74.3kDa according to NP_001030.2. The 140kDa band was successfully blocked by incubation with the immunizing peptide.
Application Type	Pep-ELISA, IHC

DOCUMENTS

- [Data Sheet](#)

GALLERY IMAGES

