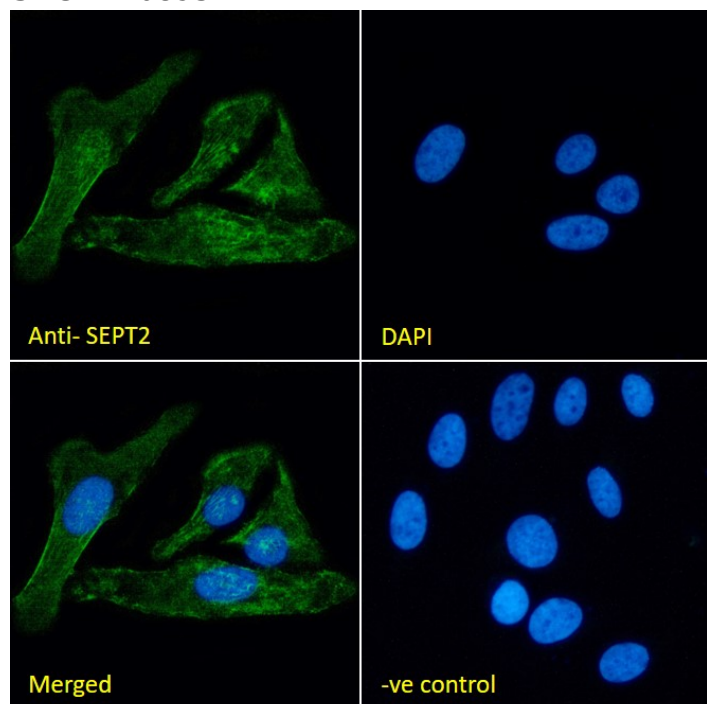


GOAT ANTI-SEPT2 ANTIBODY

SKU: EB08931



SPECIFICATIONS

Formulation	Supplied at 0.5 mg/ml in Tris saline, 0.02% sodium azide, pH7.3 with 0.5% bovine serum albumin.
Unit Size	100 µg
Storage Instructions	Aliquot and store at -20°C. Minimize freezing and thawing.
Synonym / Alias Names	neural precursor cell expressed, developmentally down-regulated 5 hNedd5 Pnutl3 NEDD5 KIAA0158 DIFF6 septin 2 SEPT2
Usage Summary	<p>Immunofluorescence: Strong expression of the protein seen in HeLa and U2OS cells.</p> <p>Flow Cytometry: Flow cytometric analysis of HeLa cells. Recommended concentration: 10ug/ml.</p>
Accession ID	NP_001008491.1; NP_001269901.1; NP_001269902.1; NP_001307958.1; NP_001336231.1
Blocking Peptide	EBP08931

Immunogen	Peptide with sequence SKQQPTQFINPET-C, from the N terminus of the protein sequence according to NP_001008491.1; NP_001269901.1; NP_001269902.1; NP_001307958.1; NP_001336231.1.
Product	This antibody is expected to recognise::NP_001008491.1 (iso a); NP_001269901.1 (iso b); NP_001269902.1 (iso c);
Comments	NP_001307958.1; (iso d) NP_001336231.1 (iso f).
Peptide Sequence	SKQQPTQFINPET-C
Purification Method	Purified from goat serum by ammonium sulphate precipitation followed by antigen affinity chromatography using the immunizing peptide.
Shipping Instructions	Refrigerated
Predicted Species	Human, Mouse, Rat
Reactive Species	Human, Mouse, Rat
Human Gene ID	4735
Mouse Gene ID	18000
Rat Gene ID	117515
Product Grade	https://prod-vector-labs-pimcore-assets.s3.us-east-1.amazonaws.com/assets/products/image/elite_plus_medium.png
IHC Results	Paraffin embedded Human Breast, Tonsil and Brain (Cortex). Recommended concentration: 2.5µg/ml.
ELISA	
Detection Limit	Antibody detection limit dilution 1:32000.
Western Blot	Approx. 40kDa band observed in lysates of cell lines HepG2, Jurkat, HeLa and KNRK, and in Rat Testis lysates, and approx. 42kDa in lysates of cell lines K562 and NIH3T3, and in Human and Mouse Testis lysates (calculated MW of 41.5kDa according to Human NP_001008491.1, Mouse NP_001153189.1 and Rat NP_476489.1). Recommended concentration: 1-2µg/ml. Primary incubation 1 hour at room temperature.
Application Type	Pep-ELISA, WB, IHC, IF, FC

DOCUMENTS

- [Data Sheet](#)

GALLERY IMAGES

