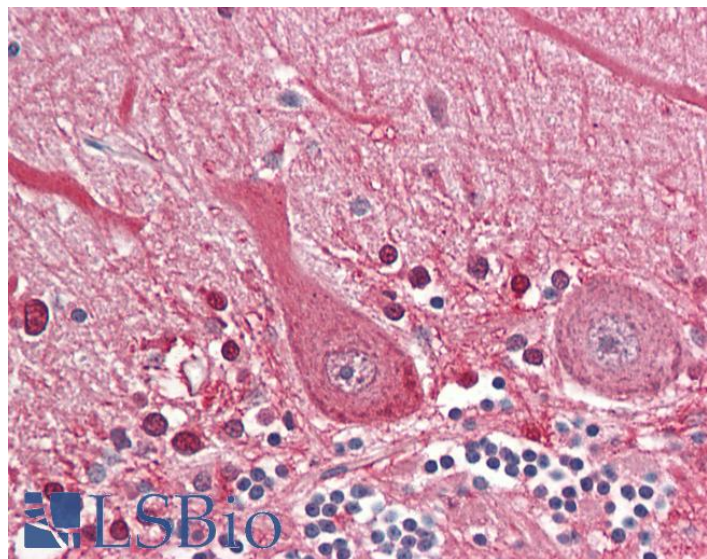


# GOAT ANTI-SEPT4 (AA425-435) ANTIBODY

**SKU:** EB10427



## SPECIFICATIONS

<b>Formulation</b>	Supplied at 0.5 mg/ml in Tris saline, 0.02% sodium azide, pH7.3 with 0.5% bovine serum albumin.
<b>Unit Size</b>	100 µg
<b>Storage Instructions</b>	Aliquot and store at -20°C. Minimize freezing and thawing.
<b>Synonym / Alias Names</b>	septin 4 SEP4 PNUTL2 peanut-like 2 MART hucep-7 hCDCREL-2 H5 cerebral protein 7 cell division control-related protein 2 CE5B3 BRADEION ARTS
<b>Usage Summary</b>	<p>&lt;p&gt;&lt;strong&gt;Flow Cytometry:&lt;/strong&gt; Flow cytometric analysis of Jurkat cells. Recommended concentration: 10ug/ml.&lt;/p&gt;</p>
<b>Accession ID</b>	NP_004565.1; NP_536341.1, NP_001185642.1
<b>Blocking Peptide</b>	EBP10427
<b>Immunogen</b>	Peptide with sequence C-RNKLTRESGTD, from the internal region of the protein sequence according to NP_004565.1; NP_536341.1, NP_001185642.1.
<b>Product Comments</b>	This antibody is expected to recognize isoform 1 (NP_004565.1), 3 (NP_536341.1) and 4 (NP_001185642.1). Amino acid numbering in name refers to NP_004565.1 sequence.
<b>Peptide Sequence</b>	C-RNKLTRESGTD

<b>Purification Method</b>	Purified from goat serum by ammonium sulphate precipitation followed by antigen affinity chromatography using the immunizing peptide.
<b>Shipping Instructions</b>	Refrigerated
<b>Predicted Species</b>	Human
<b>Reactive Species</b>	Human
<b>Human Gene ID</b>	5414
<b>Mouse Gene ID</b>	18952
<b>Product Grade</b>	<a href="https://prod-vector-labs-pimcore-assets.s3.us-east-1.amazonaws.com/assets/products/image/elite_plus_medium.png">https://prod-vector-labs-pimcore-assets.s3.us-east-1.amazonaws.com/assets/products/image/elite_plus_medium.png</a>
<b>IHC Results</b>	Paraffin embedded Human Brain (Cerebellum). Recommended concentration: 3.75µg/ml.
<b>ELISA Detection Limit</b>	Antibody detection limit dilution 1:64000.
<b>Western Blot</b>	Approx 50kDa band observed in Human Heart lysates and in preliminary testing of Mouse Brain lysate (calculated MW of 53.0kDa according to NP_536341.1). Recommended concentration: 1-3µg/ml. Primary incubation 1 hour at room temperature.
<b>Application Type</b>	Pep-ELISA, WB, IHC, FC

## DOCUMENTS

- [Data Sheet](#)

## GALLERY IMAGES

