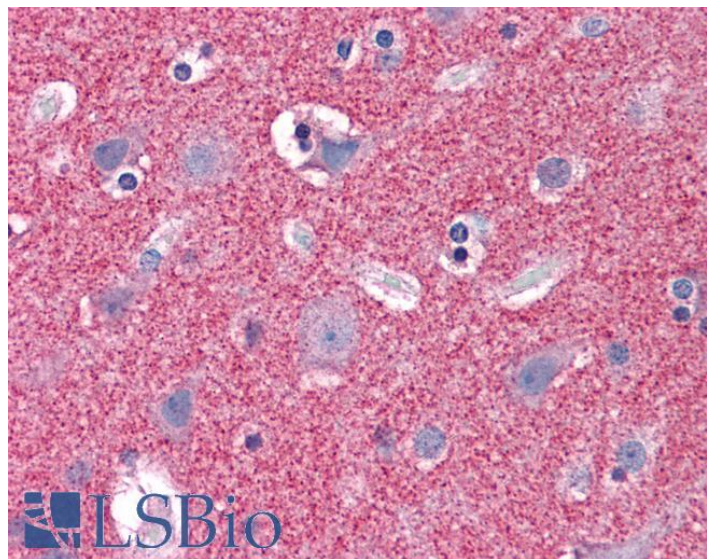


# GOAT ANTI-SEPTIN 3 ANTIBODY

**SKU:** EB05413



## SPECIFICATIONS

<b>Formulation</b>	Supplied at 0.5 mg/ml in Tris saline, 0.02% sodium azide, pH7.3 with 0.5% bovine serum albumin.
<b>Unit Size</b>	100 µg
<b>Storage Instructions</b>	Aliquot and store at -20°C. Minimize freezing and thawing.
<b>Synonym / Alias Names</b>	G-Septin neuronal-specific septin 3 OTTHUMP00000028742 bK250D10.3 MGC133218 CTA-250D10.3 SEP3 septin 3 SEPT3
<b>Accession ID</b>	NP_663786.2; NP_061979.3
<b>Blocking Peptide</b>	EBP05413
<b>Immunogen</b>	Peptide with sequence SELVPEPRPKPA-C, from the N Terminus of the protein sequence according to NP_663786.2; NP_061979.3.
<b>Product Comments</b>	This antibody is expected to recognize both reported isoforms according to NP_663786.2 and NP_061979.3.
<b>Peptide Sequence</b>	SELVPEPRPKPA-C
<b>Purification Method</b>	Purified from goat serum by ammonium sulphate precipitation followed by antigen affinity chromatography using the immunizing peptide.

<b>Shipping Instructions</b>	Refrigerated
<b>Predicted Species</b>	Human, Mouse, Rat, Dog, Pig, Cow
<b>Reactive Species</b>	Human, Mouse, Rat
<b>Human Gene ID</b>	55964
<b>Mouse Gene ID</b>	24050
<b>Product Grade</b>	<a href="https://prod-vector-labs-pimcore-assets.s3.us-east-1.amazonaws.com/assets/products/image/elite_medium.png">https://prod-vector-labs-pimcore-assets.s3.us-east-1.amazonaws.com/assets/products/image/elite_medium.png</a>
<b>IHC Results</b>	Paraffin embedded Human Brain (Cortex) and (Cerebellum) and Testis. Recommended concentration: 3.75µg/ml.
<b>ELISA Detection Limit</b>	Antibody detection limit dilution 1:32000.
<b>Western Blot</b>	Approx 40kDa band observed in Human Cerebellum and in Mouse and Rat Brain lysates (calculated MW of 40.7kDa according to Human NP_663786.2 and Rat NP_062248.2, and 40.6kDa according to Mouse NP_001345765.1). Recommended concentration: 0.03-0.5ug/ml. Primary incubation 1 hour at room temperature
<b>Application Type</b>	Pep-ELISA, WB, IHC

## DOCUMENTS

- [Data Sheet](#)

## GALLERY IMAGES

