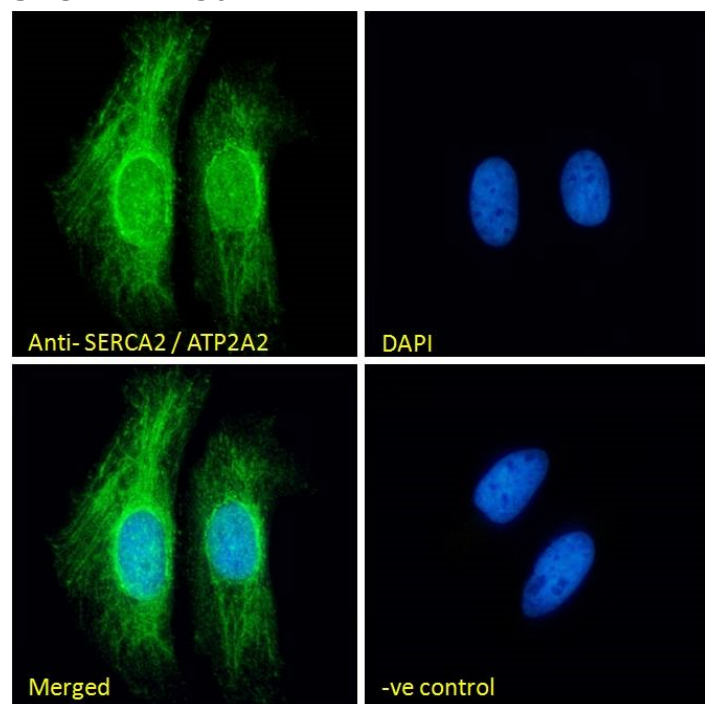


## GOAT ANTI-SERCA2 / ATP2A2 ANTIBODY

SKU: EB11450



## SPECIFICATIONS

**Formulation** Supplied at 0.5 mg/ml in Tris saline, 0.02% sodium azide, pH7.3 with 0.5% bovine serum albumin.

**Unit Size** 100 µg

**Storage Instructions** Aliquot and store at -20°C. Minimize freezing and thawing.

**Synonym / Alias Names** ATP2A2| SR Ca(2+)-ATPase 2| SERCA2| sarcoplasmic/endoplasmic reticulum calcium ATPase 2| MGC45367| FLJ38063| FLJ20293| endoplasmic reticulum class 1/2 Ca(2+) ATPase| DKFZp686P0211| DD| DAR| cardiac Ca2+ ATPase| calcium-transporting ATPase sarcoplasmic reticulum type, slow twitch skeletal muscle isoform| calcium pump 2| ATPase, Ca++ transporting, cardiac muscle, slow twitch 2| ATPase, Ca++ dependent, slow-twitch, cardiac muscle-2| ATP2B

**Usage Summary** <strong>Immunofluorescence:</strong> Strong expression of the protein seen in the endoplasmic reticulum of HeLa cells. Recommended concentration: 10µg/ml.

**Accession ID** NP\_001672.1; NP\_733765.1

**Blocking Peptide** EBP11450

<b>Immunogen</b>	Peptide with sequence DELNPSAQRDACLN, from the internal region of the protein sequence according to NP_001672.1; NP_733765.1.
<b>Product Comments</b>	This antibody is expected to recognize both reported isoforms (NP_001672.1; NP_733765.1).
<b>Peptide Sequence</b>	DELNPSAQRDACLN
<b>Purification Method</b>	Purified from goat serum by ammonium sulphate precipitation followed by antigen affinity chromatography using the immunizing peptide.
<b>Shipping Instructions</b>	Refrigerated
<b>Predicted Species</b>	Human, Mouse, Rat, Dog, Pig
<b>Reactive Species</b>	Human, Mouse, Rat
<b>Human Gene ID</b>	488
<b>Mouse Gene ID</b>	11938
<b>Rat Gene ID</b>	29693
<b>Product Grade</b>	<a href="https://prod-vector-labs-pimcore-assets.s3.us-east-1.amazonaws.com/assets/products/image/elite_plus_medium.png">https://prod-vector-labs-pimcore-assets.s3.us-east-1.amazonaws.com/assets/products/image/elite_plus_medium.png</a>
<b>IHC Results</b>	Paraffin embedded Human Heart. Recommended concentration: 5µg/ml.
<b>ELISA Detection Limit</b>	Antibody detection limit dilution 1:128000.
<b>Western Blot</b>	Approx. 110kDa band observed in Human, Mouse and Rat Heart lysates and in lysates of cell line A549, and approx. 100kDa in Mouse Smooth Muscle lysates (calculated MW of 110kDa according to Human NP_001672.1, Mouse NP_033852.1 and Rat NP_001103609.1). Recommended concentration: 0.1-0.3µg/ml. Primary incubation 1 hour at room temperature.
<b>Application Type</b>	Pep-ELISA, WB, IF, IHC

## DOCUMENTS

- [Data Sheet](#)

## GALLERY IMAGES

