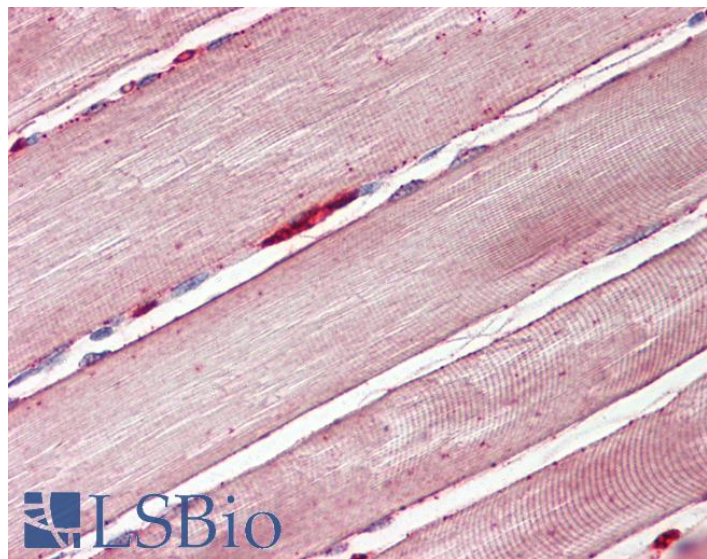


GOAT ANTI-SLC2A4 / GLUT4 ANTIBODY

SKU: EB10148



SPECIFICATIONS

Formulation Supplied at 0.5 mg/ml in Tris saline, 0.02% sodium azide, pH7.3 with 0.5% bovine serum albumin.

Unit Size 100 µg

Storage Instructions Aliquot and store at -20°C. Minimize freezing and thawing.

Synonym / Alias Names SLC2A4|solute carrier family 2 (facilitated glucose transporter), member 4|insulin-responsive glucose transporter type 4|GLUT4|glucose transporter 4

Accession ID NP_001033.1

Blocking Peptide EBP10148

Immunogen Peptide with sequence C-TELEYLGPDEND, from the C Terminus of the protein sequence according to NP_001033.1.

Peptide Sequence C-TELEYLGPDEND

Purification Method Purified from goat serum by ammonium sulphate precipitation followed by antigen affinity chromatography using the immunizing peptide.

Shipping Instructions Refrigerated

Predicted Species	Human, Mouse, Rat, Cow, Pig
Reactive Species	Human, Mouse
Human Gene ID	6517
Mouse Gene ID	20528
Rat Gene ID	25139
Product Grade	https://prod-vector-labs-pimcore-assets.s3.us-east-1.amazonaws.com/assets/products/image/elite_medium.png
IHC Results	Paraffin embedded Human Skeletal Muscle. Recommended concentration: 3.75µg/ml.
ELISA	
Detection Limit	Antibody detection limit dilution 1:16000.
Western Blot	Approx 40-45kDa band observed in Mouse Heart lysates (calculated MW of 54.8kDa according to Human NP_001033.1 and Mouse NP_033230.2). The observed molecular weight corresponds to earlier findings in literature with different antibodies (Fischer et al, J Biol Chem. 1997 Mar 14;272(11):7085-92.; PMID: 9054401). Recommended concentration: 0.3-1µg/ml. Primary incubation was 1 hour.
Application Type	Pep-ELISA, WB, IHC

DOCUMENTS

- [Data Sheet](#)

GALLERY IMAGES

