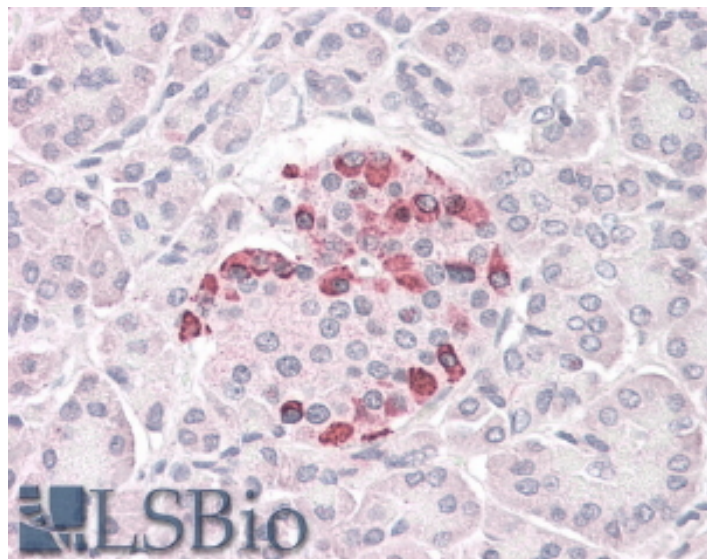


GOAT ANTI-SOCS4 ANTIBODY

SKU: EB05347



SPECIFICATIONS

Formulation Supplied at 0.5 mg/ml in Tris saline, 0.02% sodium azide, pH7.3 with 0.5% bovine serum albumin.

Unit Size 100 µg

Storage Instructions Aliquot and store at -20°C. Minimize freezing and thawing.

Synonym / Alias Names suppressor of cytokine signaling 7|SH2 domain containing SOCS box protein|SOCS7|DKFZp686J1568|suppressor of cytokine signaling 4|SOCS4

Accession ID NP_543143.1; NP_955453.1

Blocking Peptide EBP05347

Immunogen Peptide with sequence C-SKVRVLRIDAPEQQ, from the C Terminus of the protein sequence according to NP_543143.1; NP_955453.1.

Product Comments Both variants represent identical protein (NP_543143.1 and NP_955453.1).

Peptide Sequence C-SKVRVLRIDAPEQQ

Purification Method Purified from goat serum by ammonium sulphate precipitation followed by antigen affinity chromatography using the immunizing peptide.

Shipping Instructions	Refrigerated
Predicted Species	Human, Pig, Cow
Reactive Species	Human
Human Gene ID	122809
Product Grade	https://prod-vector-labs-pimcore-assets.s3.us-east-1.amazonaws.com/assets/products/image/elite_medium.png
IHC Results	In paraffin embedded Human Pancreas shows cytoplasm staining on select beta cells in islet of Langerhans. Recommended concentration, 3-6µg/ml.
ELISA	
Detection Limit	Antibody detection limit dilution 1:32000.
Application Type	Pep-ELISA, IHC

DOCUMENTS

- [Data Sheet](#)

GALLERY IMAGES

